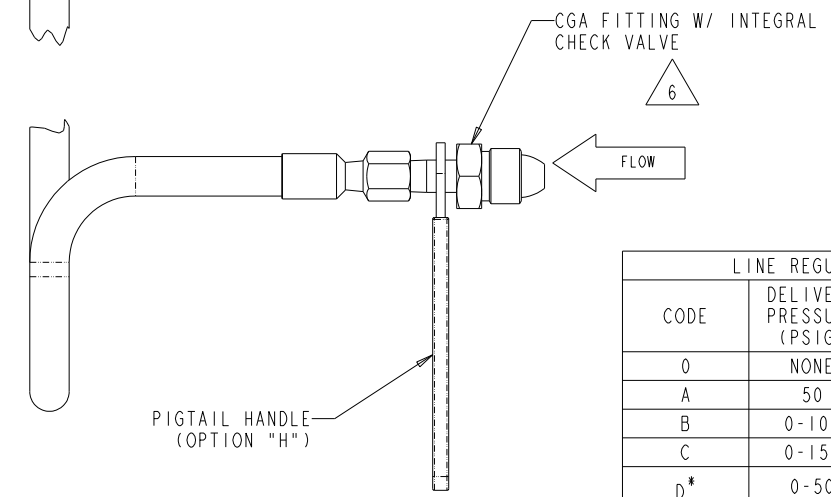
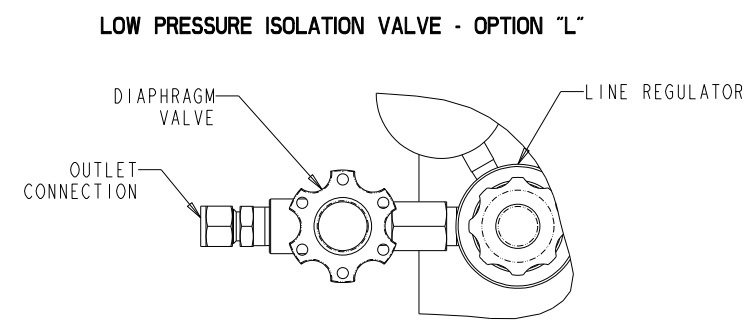
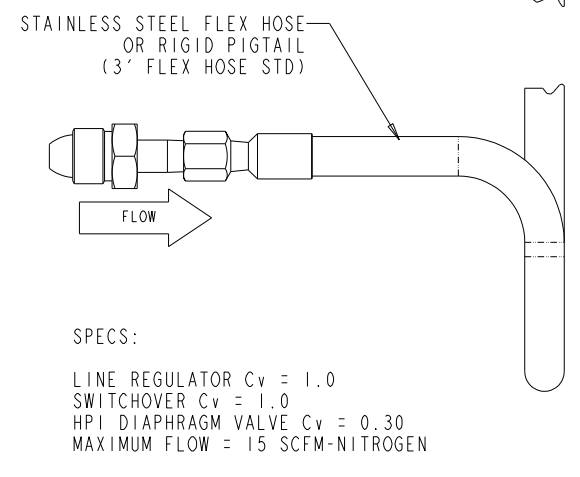
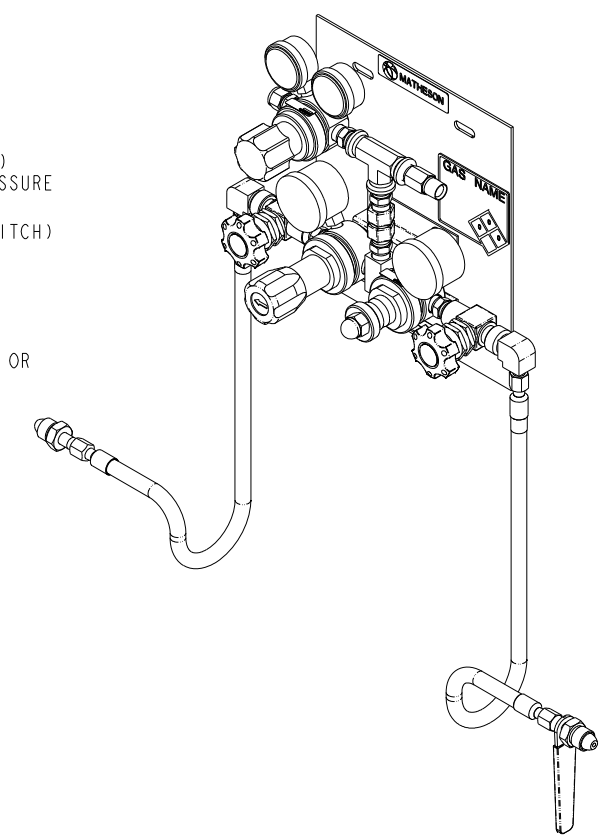
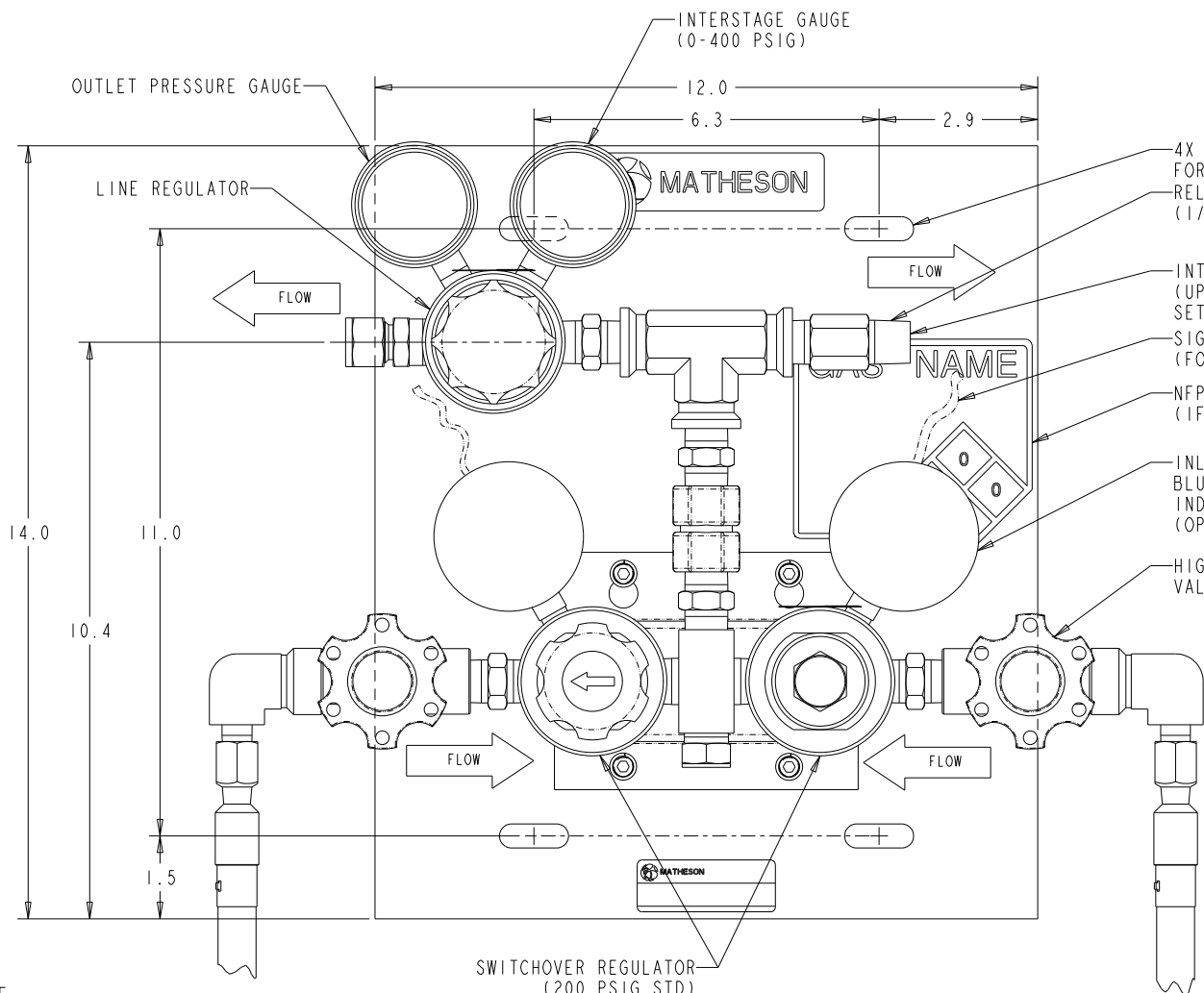
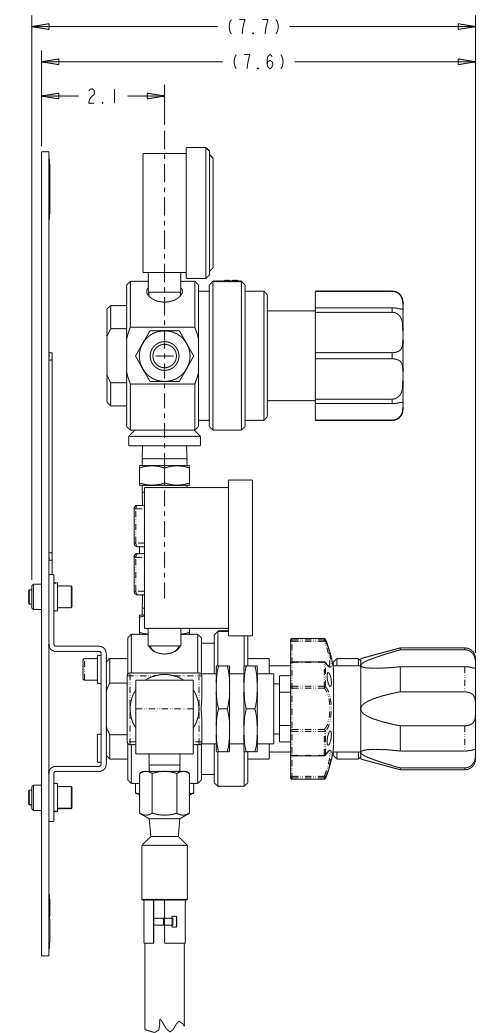


REF ONLY FOR PDM USE ONLY	DWG NO. MNUM-0104-OL-	MODEL NO. MNUM-0106-XX-	REVISIONS		
SH-ZONE	REV	DESCRIPTION	ECO NO.	BY/DATE	APVD/DATE
-	A	RELEASED FOR PRODUCTION	3053	DL-12/2/19	WS-12/4/19



LINE REGULATOR		
CODE	DELIVERY PRESSURE (PSIG)	OUTLET GAUGE (PSIG)
0	NONE	400
A	50	100
B	0-100	200
C	0-150	200
D*	0-50	100
E*	0-100	200

* SWITCHOVER PRESSURE 170 PSIG

- NOTES:
- APPROX. WEIGHT 30 LBS.
 - BACKPLATE 0.125" THK HRS FINISHED W/ SHERWIN WILLIAMS POLANE T POLYURETHANE ENAMEL NITRO BLUE #F63L17.
 - LEAK TESTED BUBBLE TIGHT.
 - ARROW INDICATES PRIMARY SIDE IN SERVICE.
 - FLEX HOSES SHIPPED ATTACHED.
 - SOME CGA FITTINGS DO NOT HAVE INTEGRAL CHECK VALVE.
 - MAXIMUM WORKING PRESSURE IS THE LESSER OF 3000 PSIG OR THE MAXIMUM ALLOWED BY THE CGA CONNECTION.
 - SYSTEM TO PASS PRESSURE RATING PER CRITERIA ON ANSI/ASME B31.3.
 - SYSTEM TO BE CLEANED TO CGA-4.1 AND ASTM G93.

ITEM	MATERIALS	
	HF3 SERIES	HF4 SERIES
REGULATORS	BRASS	SS
REGULATOR DIAPHRAGMS	SS	SS
RELIEF VALVE	BR/BUNA-N	SS/FKM
FLEX HOSE	SS	SS
OTHER PARTS	BRASS	SS

PROPRIETARY STATEMENT THIS DOCUMENT CONTAINS INFORMATION PROPRIETARY TO MATHESON TRI-GAS, INC. AND SHALL NOT BE REPRODUCED OR DISCLOSED TO THIRD PARTIES WITHOUT PRIOR WRITTEN CONSENT FROM MATHESON TRI-GAS.

TOLERANCES	
INCH	METRIC
X ± .1	X ± .8
.X ± .03	.X ± .3
.XX ± .01	.XX ± .13
.XXX ± .005	
63 ✓	1.6 ✓
ANGLES ± 1/2°	

MATERIAL:
FINISH:
THIRD ANGLE PROJECTION
DO NOT SCALE DRAWING

APPROVALS	
DRAWN BY:	DATE:
DL	12/2/19
CHECKED BY:	DATE:
WS	12/4/19
ENGINEER:	DATE:
WS	12/4/19

MATHESON
 est. 1911 The Gas Professionals™
 GAS EQUIPMENT TECHNOLOGY GROUP, MONTGOMERYVILLE, PA 18936

TITLE:
**OUTLINE DRAWING,
 HIGH FLOW SWITCHOVER, 2 CYL,
 HPI**

SIZE: **D** DWG. NO.: **MNUM-0104-OL** REV: **A**

CREO SCALE: NTS SHEET 1 OF 1