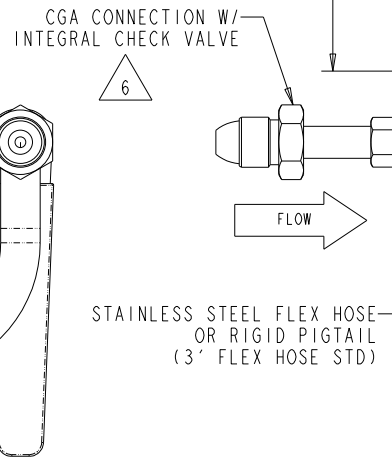
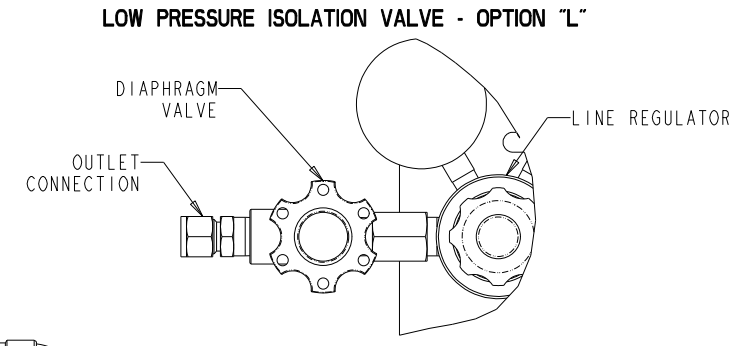
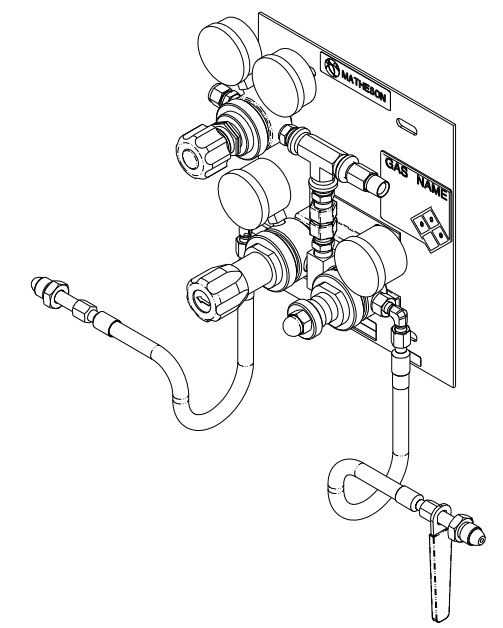
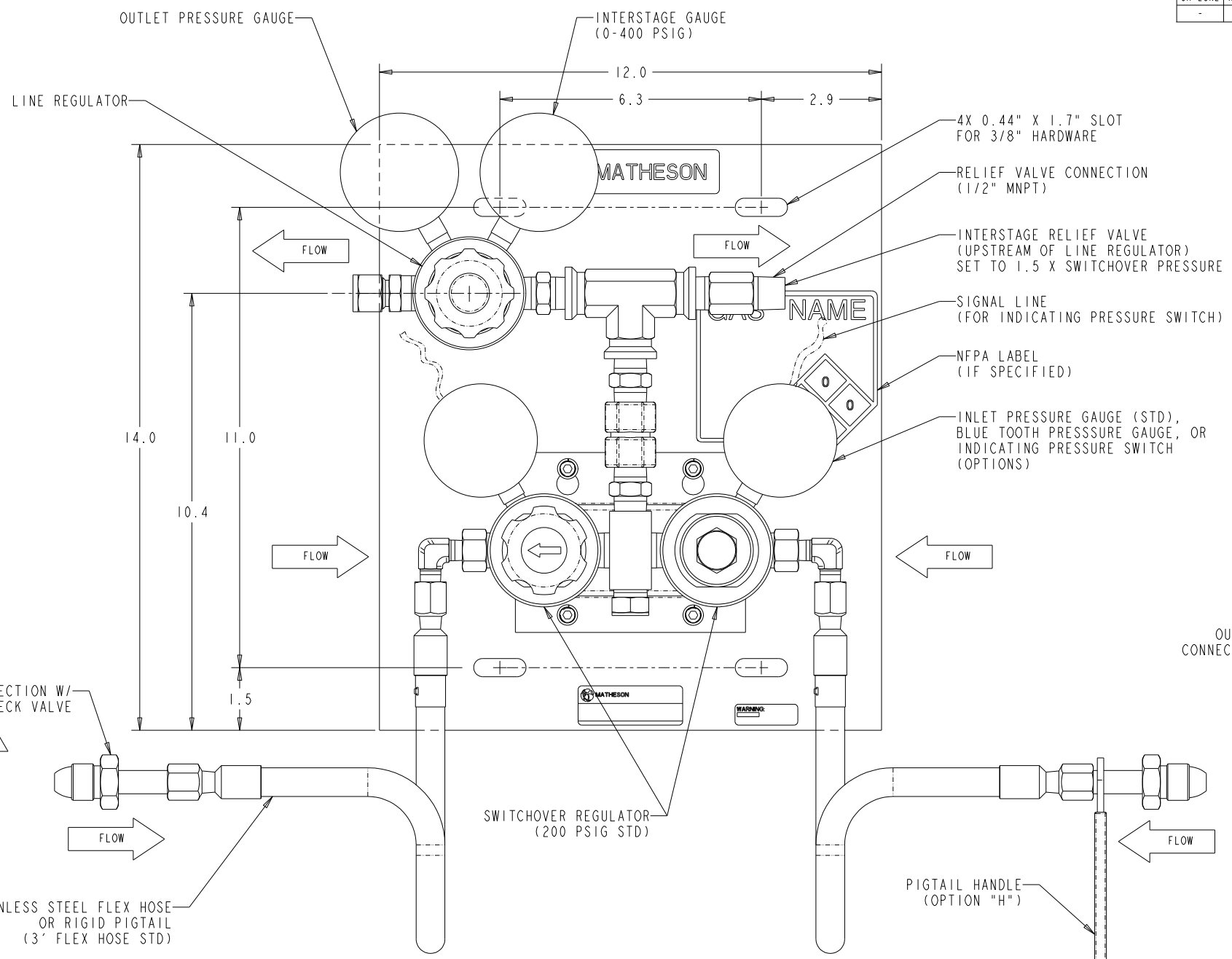
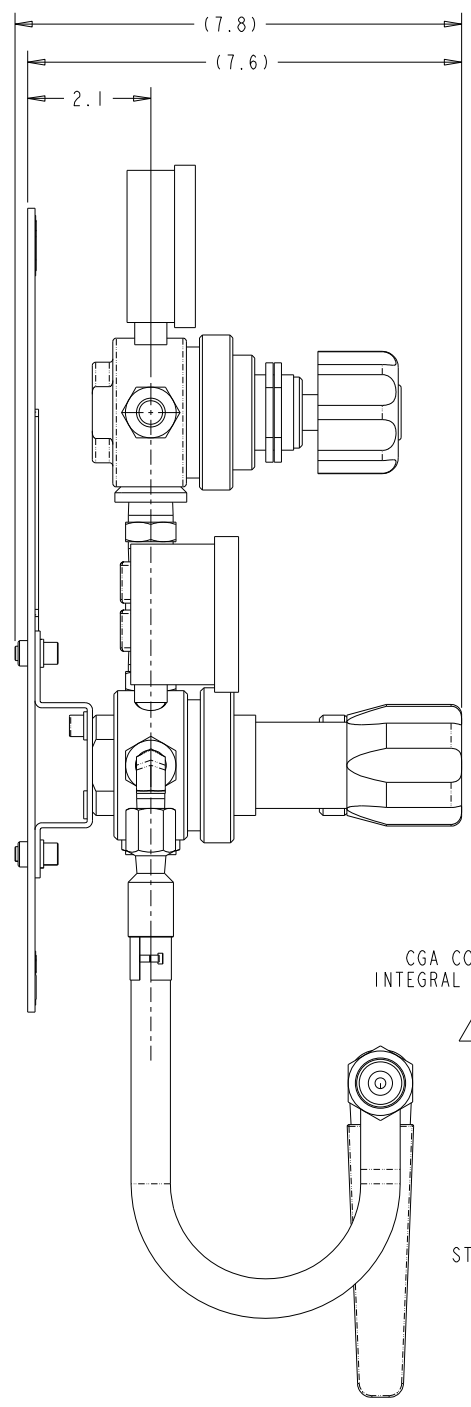


REF ONLY FOR PDM USE ONLY	DWG NO. MNUM-0102-OL	MODEL NO. MNUM-0102-XX	REVISIONS		
SH-ZONE	REV	DESCRIPTION	ECO NO.	BY/DATE	APVD/DATE
-	A	RELEASED FOR PRODUCTION	3053	DL-10/21/19	WS-10/29/19



MATERIALS		
ITEM	HF3 SERIES	HF4 SERIES
REGULATORS	BRASS	SS
REGULATOR DIAPHRAGMS	SS	SS
RELIEF VALVE	BR/BUNA-N	SS/FKM
FLEX HOSE	SS	SS
OTHER PARTS	BRASS	SS

LINE REGULATOR		
CODE	DELIVERY PRESSURE (PSIG)	OUTLET GAUGE (PSIG)
0	NONE	400
A	50	100
B	0-100	200
C	0-150	200
D*	0-50	100
E*	0-100	200

\* SWITCHOVER PRESSURE 170 PSIG

- NOTES:
- APPROX. WEIGHT 30 LBS.
  - BACKPLATE 0.125" THK HRS FINISHED W/ SHERWIN WILLIAMS POLANE T POLYURETHANE ENAMEL NITRO BLUE #F63L17.
  - LEAK TESTED BUBBLE TIGHT.
  - ARROW INDICATES PRIMARY SIDE IN SERVICE.
  - FLEX HOSES SHIPPED ATTACHED.
  - SOME CGA FITTINGS DO NOT HAVE INTEGRAL CHECK VALVE.
  - MAXIMUM WORKING PRESSURE IS THE LESSER OF 3000 PSIG OR THE MAXIMUM ALLOWED BY THE CGA CONNECTION.
  - SYSTEM TO PASS PRESSURE RATING PER CRITERIA ON ANSI/ASME B31.3.
  - SYSTEM TO BE CLEANED TO CGA-4.1 AND ASTM G93.

SPECS:

LINE REGULATOR Cv = 1.0  
 SWITCHOVER Cv = 1.0  
 DIAPHRAGM VALVE Cv = 0.30  
 STATION VALVE Cv = 0.30-0.35  
 MAXIMUM FLOW = 15 SCFM-NITROGEN

PROPRIETARY STATEMENT THIS DOCUMENT CONTAINS INFORMATION PROPRIETARY TO MATHESON TRI-GAS, INC. AND SHALL NOT BE REPRODUCED OR DISCLOSED TO THIRD PARTIES WITHOUT PRIOR WRITTEN CONSENT FROM MATHESON TRI-GAS.

TOLERANCES	
INCH	METRIC
X ± .1	X ± .8
.X ± .03	.X ± .3
.XX ± .01	.XX ± .13
.XXX ± .005	
63/	1.6/
ANGLES ± 1/2°	

MATERIAL:  
FINISH:  
THIRD ANGLE PROJECTION  
DO NOT SCALE DRAWING

APPROVALS	
DRAWN BY: DL	DATE: 10/21/19
CHECKED BY: WS	DATE: 10/29/19
ENGINEER: WS	DATE: 10/29/19

**MATHESON**  
 est. 1917 The Gas Professionals™  
 GAS EQUIPMENT TECHNOLOGY GROUP, MONTGOMERYVILLE, PA 18936

TITLE:  
**OUTLINE DRAWING, HIGH-FLOW SWITCHOVER, 2 CYL**

SIZE: **D**  
 DWS. NO.: **MNUM-0102-OL**  
 CREO: \_\_\_\_\_ SCALE: NTS SHEET 1 OF 1