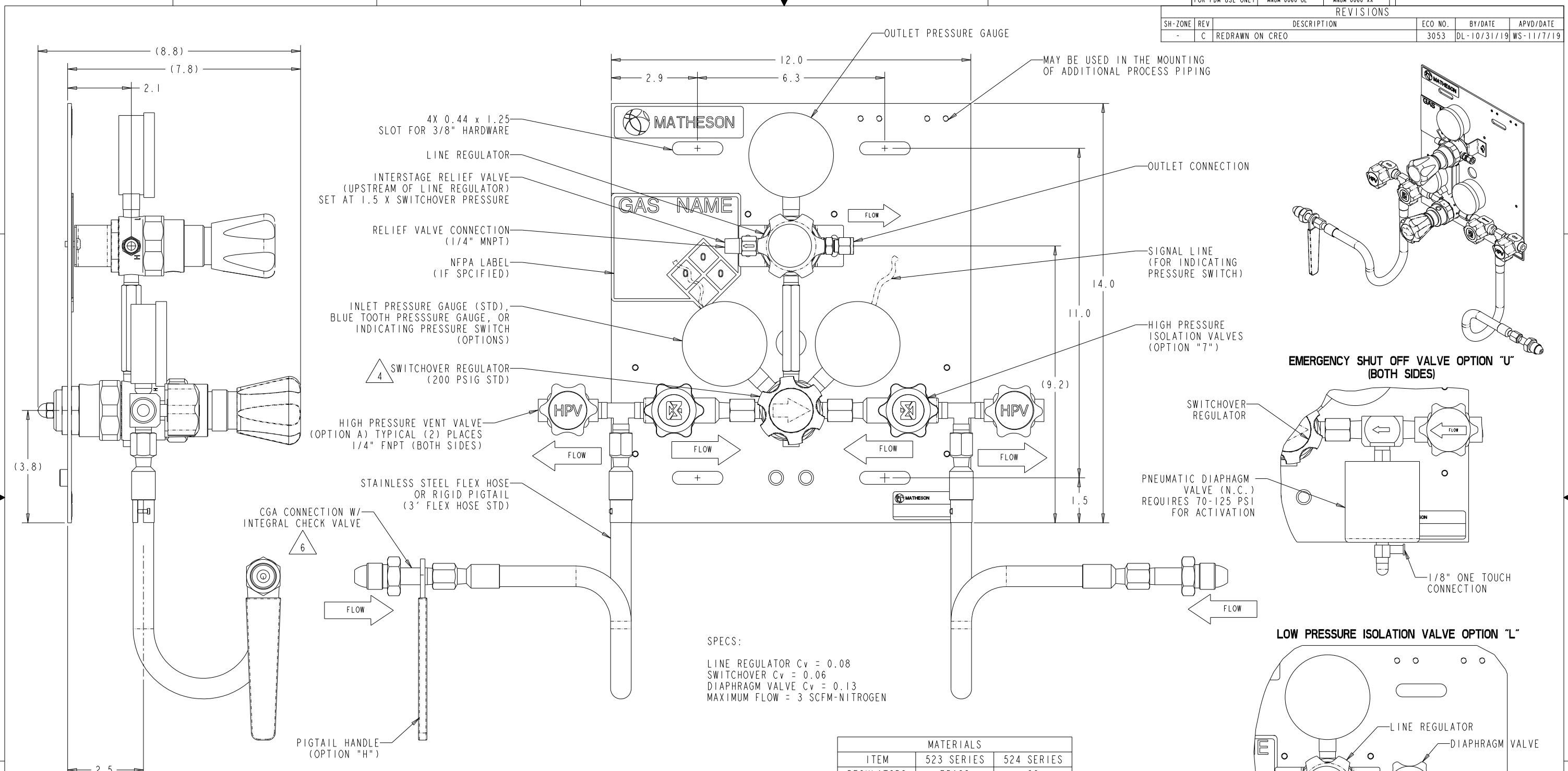


REF ONLY FOR PDM USE ONLY	DWG NO. MNUM-0060-OL	MODEL NO. MNUM-0060-XX	REVISIONS		
SH-ZONE	REV	DESCRIPTION	ECO NO.	BY/DATE	APVD/DATE
-	C	REDRAWN ON CREO	3053	DL-10/31/19	WS-11/7/19



- NOTES:
- APPROX. WEIGHT 25 LBS.
 - BACKPLATE 0.125" THK HRS FINISHED W/ SHERWIN WILLIAMS POLANE T POLYURETHANE ENAMEL NITRO BLUE #F63L17.
 - LEAK TESTED BUBBLE TIGHT.
 - ARROW INDICATES PRIMARY SIDE IN SERVICE.
 - FLEX HOSES SHIPPED ATTACHED.
 - SOME CGA FITTINGS DO NOT HAVE INTEGRAL CHECK VALVE.
 - MAXIMUM WORKING PRESSURE IS THE LESSER OF 3000 PSIG OR THE MAXIMUM ALLOWED BY THE CGA CONNECTION.
 - SYSTEM TO PASS PRESSURE RATING PER CRITERIA ON ANSI/ASME B31.3.
 - SYSTEM TO BE CLEANED TO CGA-4.1 AND ASTM G93.

LINE REGULATOR		
CODE	DELIVERY PRESSURE (PSIG)	OUTLET GAUGE (PSIG)
O	NONE	400
A	0-30	60
B	0-100	200
C	0-150	200
D*	0-30	60
E*	0-125	200
O**	0-250	400

* SWITCHOVER PRESSURE 170 PSIG
 ** SWITCHOVER PRESSURE 330 PSIG

SPECS:
 LINE REGULATOR Cv = 0.08
 SWITCHOVER Cv = 0.06
 DIAPHRAGM VALVE Cv = 0.13
 MAXIMUM FLOW = 3 SCFM-NITROGEN

ITEM	MATERIALS	
	523 SERIES	524 SERIES
REGULATORS	BRASS	SS
REGULATOR DIAPHRAGMS	SS	SS
RELIEF VALVE	BR/BUNA-N	SS/FKM
FLEX HOSE	SS	SS
OTHER PARTS	BRASS	SS

PROPRIETARY STATEMENT THIS DOCUMENT CONTAINS INFORMATION PROPRIETARY TO MATHESON TRI-GAS, INC. AND SHALL NOT BE REPRODUCED OR DISCLOSED TO THIRD PARTIES WITHOUT PRIOR WRITTEN CONSENT FROM MATHESON TRI-GAS.

TOLERANCES	
INCH	METRIC
X ± .1	X ± .8
.X ± .03	.X ± .3
.XX ± .01	.XX ± .13
.XXX ± .005	
63/	1.6/
ANGLES ± 1/2°	

MATERIAL:
 FINISH:
 THIRD ANGLE PROJECTION
 DO NOT SCALE DRAWING

APPROVALS	
DRAWN BY: DL	DATE: 10/31/19
CHECKED BY: WS	DATE: 11/7/19
ENGINEER: WS	DATE: 11/7/19

MATHESON
 Gas Equipment Technology Group, Montgomeryville, PA 18936

TITLE:
OUTLINE DRAWING SWITCHOVER ASSEMBLY, HPI, HPV, W/ LINE REGULATOR, W/ FLEX HOSES

SIZE: **D**
 DWS. NO.: **MNUM-0060-OL**
 REV: **C**
 SCALE: NTS
 SHEET 1 OF 1