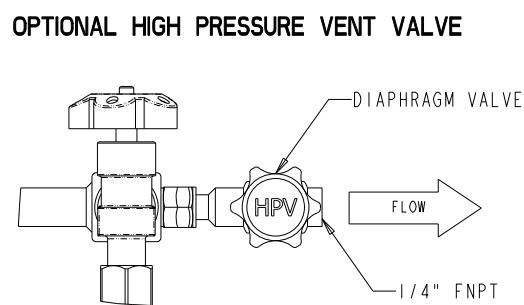
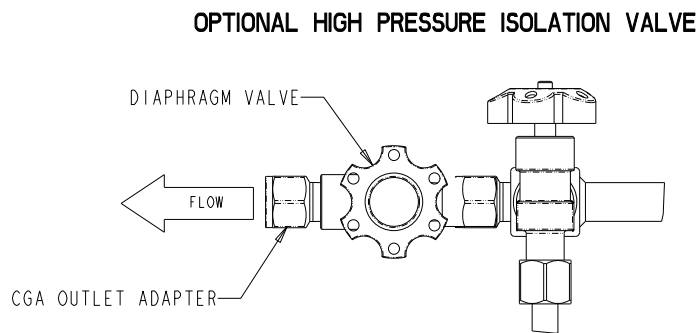
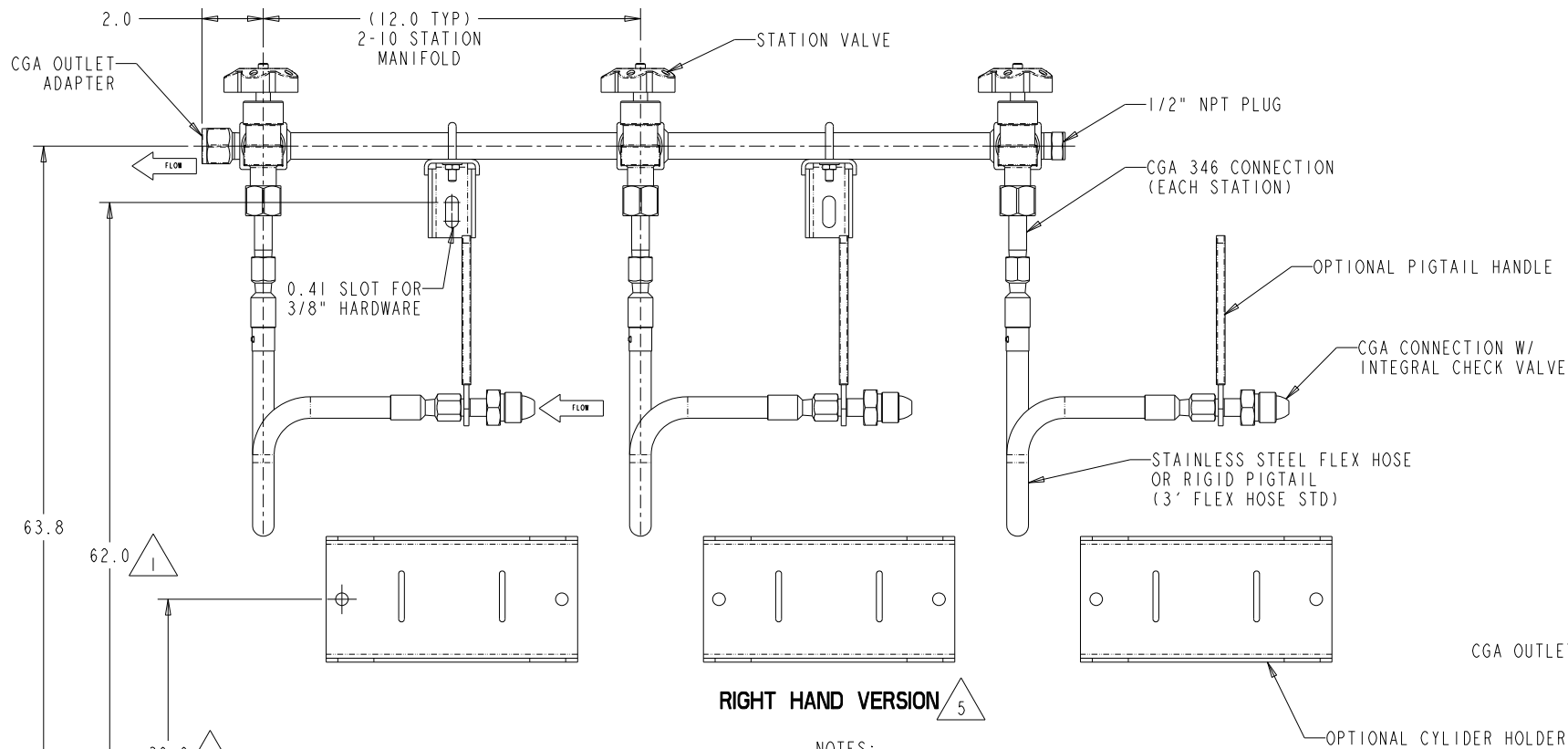
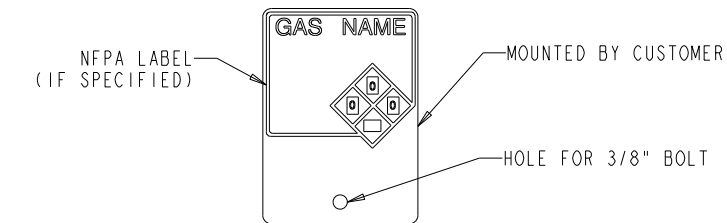
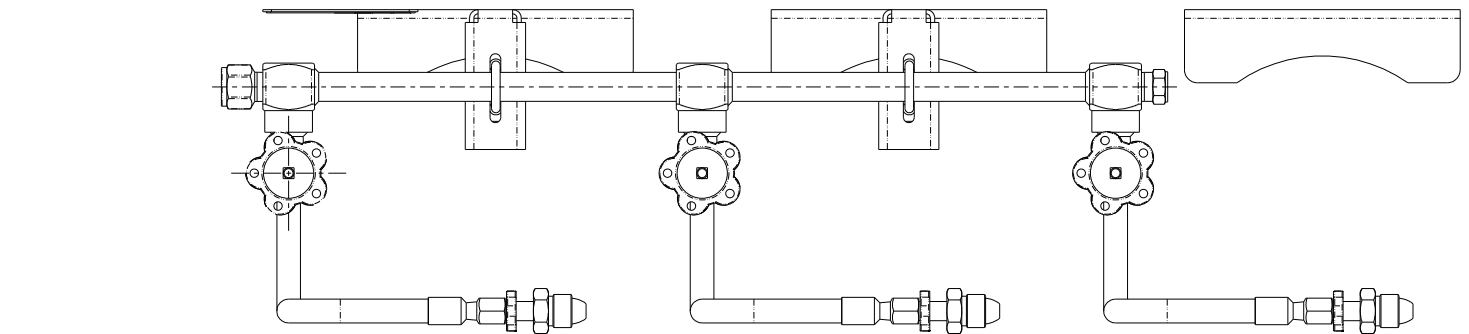
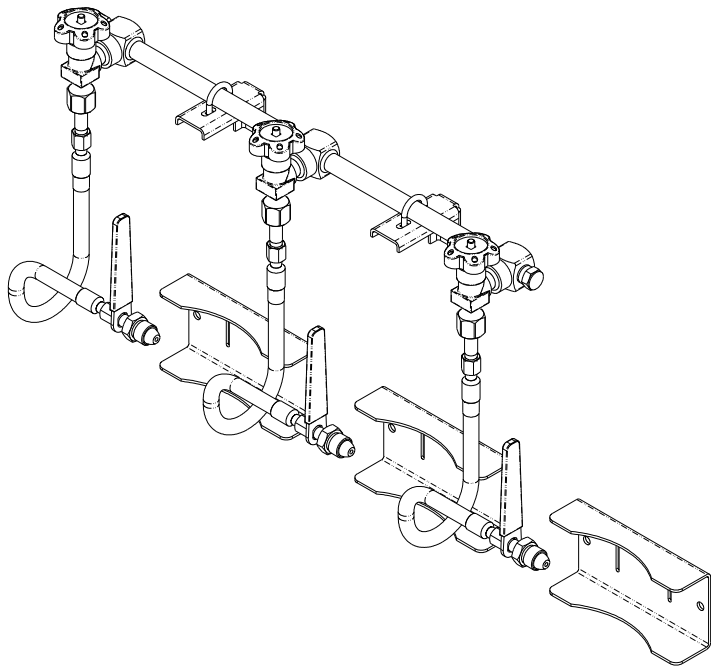
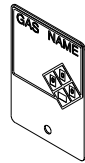


REF ONLY FOR PDM USE ONLY		DWG NO. MNUM-0039-OL-	MODEL NO. M54-381-	1		
REVISIONS				ECO NO.	BY/DATE	APVD/DATE
SH-ZONE	REV	DESCRIPTION				
-	B	RELEASED FOR PRODUCTION		-	DL-8/21/20	WS-10/6/21



SPECS:
STATION VALVE Cv = 0.30-0.35
ISOLATION VALVE Cv = 0.30
VENT VALVE Cv = 0.13

MATERIALS		
ITEM	53 SERIES	54 SERIES
MANIFOLD HEADER	BRASS	SS
STATION VALVES	BRASS/PCTFE SEAT	SS/PCTFE SEAT
ISOLATION VALVE	SS/PCTFE SEAT	SS/PCTFE SEAT
VENT VALVE	BRASS/PCTFE SEAT	SS/PCTFE SEAT
FLEX HOSE	SS	SS
OTHER PARTS	BRASS	SS

- NOTES:
- RECOMMENDED MOUNTING HEIGHT FOR 51" TALL CYLINDERS.
 - TWO STATION INCLUDES TWO (2) MOUNTING BRACKETS.
 - MAX WORKING PRESSURE PER CGA CONNECTION.
 - STANDARD MANIFOLD ASSEMBLY INCLUDES FLEXHOSE PIGTAIL AND CGA WITH INTEGRAL CHECK VALVE, ON THE LEFT HAND VERSION LOCATION OF CGA OUTLET ADAPTER AND PLUG ARE REVERSED.
 - PIGTAILS SHIPPED LOOSE.
 - ON LEFT HAND VERSION - LOCATION OF HIGH PRESSURE ISOLATION VALVE AND HIGH PRESSURE VENT VALVES ARE REVERSED.

PROPRIETARY STATEMENT THIS DOCUMENT CONTAINS INFORMATION PROPRIETARY TO MATHESON TRI-GAS, INC. AND SHALL NOT BE REPRODUCED OR DISCLOSED TO THIRD PARTIES WITHOUT PRIOR WRITTEN CONSENT FROM MATHESON TRI-GAS.

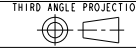
TOLERANCES

INCH	METRIC
X ± .1	X ± .8
.X ± .03	.X ± .3
.XX ± .01	.XX ± .13
.XXX ± .005	

63/1.6
ANGLES ± 1/2°

MATERIAL:

FINISH:



DO NOT SCALE DRAWING

APPROVALS

DRAWN BY:	DATE:
DL	8/21/20
CHECKED BY:	DATE:
WS	10/6/21
ENGINEER:	DATE:
WS	10/6/21

MATHESON
ask...The Gas Professionals™
GAS EQUIPMENT TECHNOLOGY GROUP, MONTGOMERYVILLE, PA 18936

TITLE:
**OUTLINE DRAWING
TWO THRU TEN STATION MANIFOLD
53 AND 54 MATRIX SERIES**

SIZE **D** DWG. NO. **MNUM-0039-OL** REV **B**

CREO SCALE: NTS SHEET 1 OF 1