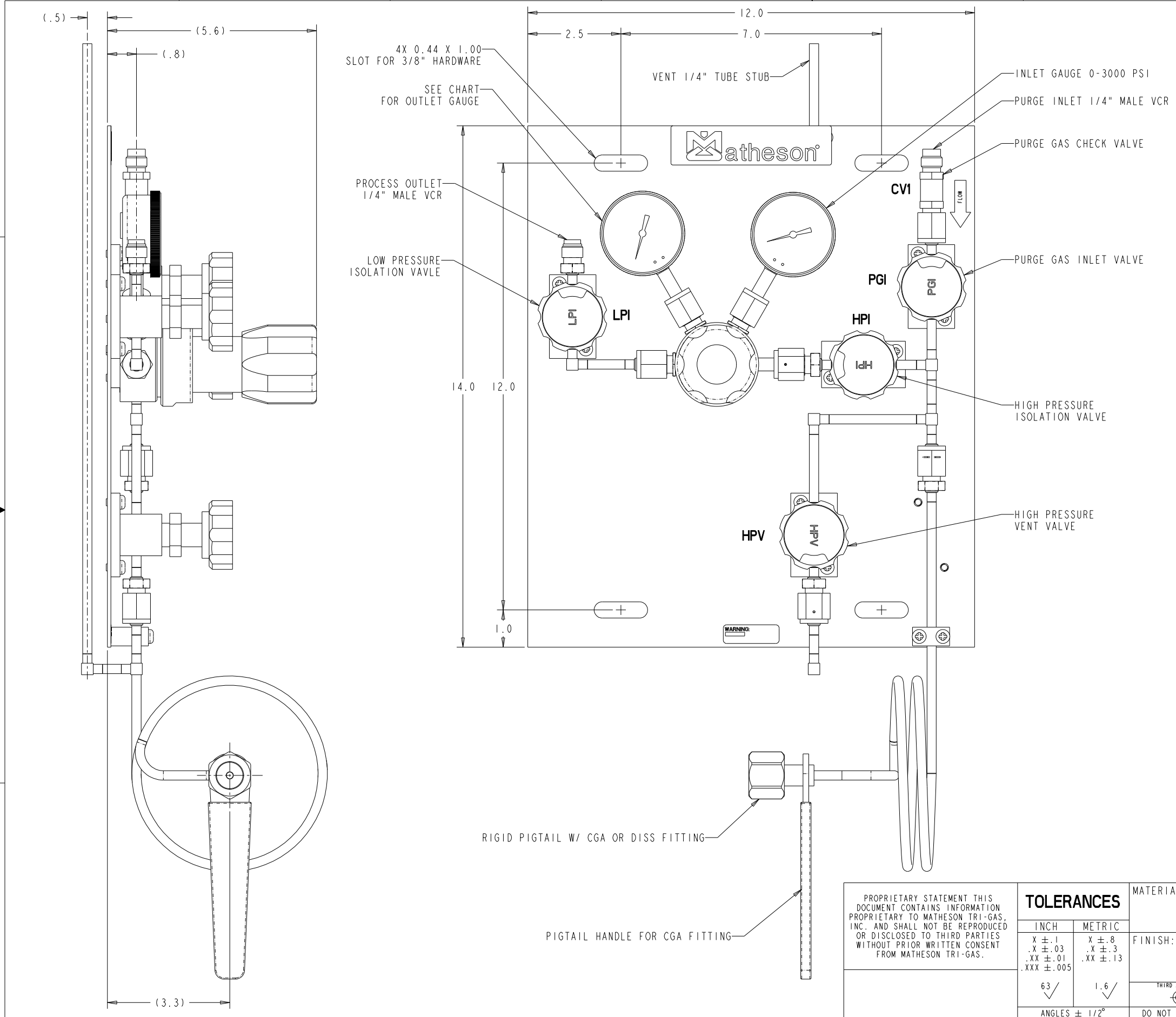


REF ONLY FOR PDM USE ONLY	DWG NO. MPAN-9400-XXX-0-OL	MODEL NO. MPAN-9400-XXX-0	REVISIONS		
SH-ZONE	REV	DESCRIPTION	ECO NO.	BY/DATE	APVD/DATE
-	A	RELEASED FOR PRODUCTION	3587	DL-10/29/20	WS-10/30/20



- NOTES:
- APPROX WEIGHT: 20 LBS.
 - BACKPLATE: 0.090" THK 300 SERIES STAINLESS STEEL
 - REGULATOR: TIED DIAPHRAGM SEMICONDUCTOR GRADE 9360 SERIES
 - VCR TYPE AND BUTT-WELD CONSTRUCTION
 - VALVES: ROUND KNOB, 1/4 TURN, OPEN/CLOSED STATUS INDICATION WINDOW
 - HELIUM LEAK TESTED 1×10^{-9} scc/sec - Helium
 - MAXIMUM WORKING PRESSURE IS THE LESSER OF 3000 PSIG OR THE MAXIMUM ALLOWED BY THE CGA OR DISS CONNECTION
 - SYSTEM TO PASS PRESSURE RATING PER CRITERIA ON ANSI/ASME B31.3
 - ASSEMBLED IN CLASS 100 CLEAN ROOM

- MATERIALS OF CONSTRUCTION:
- REGULATOR BODY: 316L STAINLESS STEEL
 - REGULATOR BONNET: NICKEL PLATED BRASS
 - REGULATOR DIAPHRAGM: 316 STAINLESS STEEL
 - REGULATOR SEAT: KEL-F 81
 - REGULATOR LINKAGE: 316 STAINLESS STEEL
 - REGULATOR SPRING: 316 STAINLESS STEEL
 - REGULATOR SEALS: METAL TO METAL
 - REGULATOR FINISH: 10 Ra MAX
 - VALVE BODY: 316L STAINLESS STEEL VAR SECONDARY REMELT
 - VALVE FINISH: 10 RA MAX - ELECTROPOLISHED AND PASSIVATED
 - VALVE DIAPHRAGM: NI-CO ALLOY / UNS R30003
 - VALVE SEAT: PCTFE
 - PURGE GAS CHECK VALVE: 316L STAINLESS/VITON (STD) -NEOPRENE OR ETHYLENE PROPYLENE (OPTION)
 - GAUGES: 316L STAINLESS STEEL
 - TUBING: ELECTROPOLISHED 316L STAINLESS STEEL
 - BACKPLATE: 300 SERIES STAINLESS STEEL
 - MOUNTING BLOCKS: CLEAR ANODIZED ALUMINUM

- SPECIFICATIONS:
- REGULATOR FLOW CAPACITY (CV): 0.09
 - VALVES FLOW CAPACITY (CV): 0.29
 - OPERATING TEMPERATURE: -40°F TO 160°F (-40°C TO 71°C)
 - INLET CONNECTION: CGA OR DISS
 - OUTLET CONNECTION: 1/4" MALE VCR
 - VENT LINE CONNECTION: 1/4" X .035 WALL, SS TUBING

- UTILITIES NEEDED:
- PURGE GAS: 50 - 100 PSIG OF INERT GAS (TYPICALLY N2, AR, OR HE) FILTERED TO 0.01 μm, 99.999 % PURITY

REGULATOR		
PART NUMBER	DELIVERY PRESSURE (PSIG)	OUTLET GAUGE (PSIG)
SEQ PAN9400xxx0	0-30	60
SEQ PAN9410xxx0	0-100	200

PROPRIETARY STATEMENT THIS DOCUMENT CONTAINS INFORMATION PROPRIETARY TO MATHESON TRI-GAS, INC. AND SHALL NOT BE REPRODUCED OR DISCLOSED TO THIRD PARTIES WITHOUT PRIOR WRITTEN CONSENT FROM MATHESON TRI-GAS.

TOLERANCES		MATERIAL:
INCH	METRIC	
X ± .1	X ± .8	FINISH:
.X ± .03	.X ± .3	
.XX ± .01	.XX ± .13	
.XXX ± .005		
63/	1.6/	THIRD ANGLE PROJECTION
ANGLES ± 1/2°		
DO NOT SCALE DRAWING		

APPROVALS	
DRAWN BY:	DATE:
DL	10/29/20
CHECKED BY:	DATE:
WS	10/30/20
ENGINEER:	DATE:
WS	10/30/20

MATHESON
ask...The Gas Professionals™
GAS EQUIPMENT TECHNOLOGY GROUP, MONTGOMERYVILLE, PA 18936

TITLE:
**OUTLINE DRAWING
HIGH PURITY PAN-9400 SERIES PANEL**

DWG. NO.
MPAN-9400-XXX-0-OL

REV
A

SIZE
D

CREO
SCALE: NTS
SHEET 1 OF 1