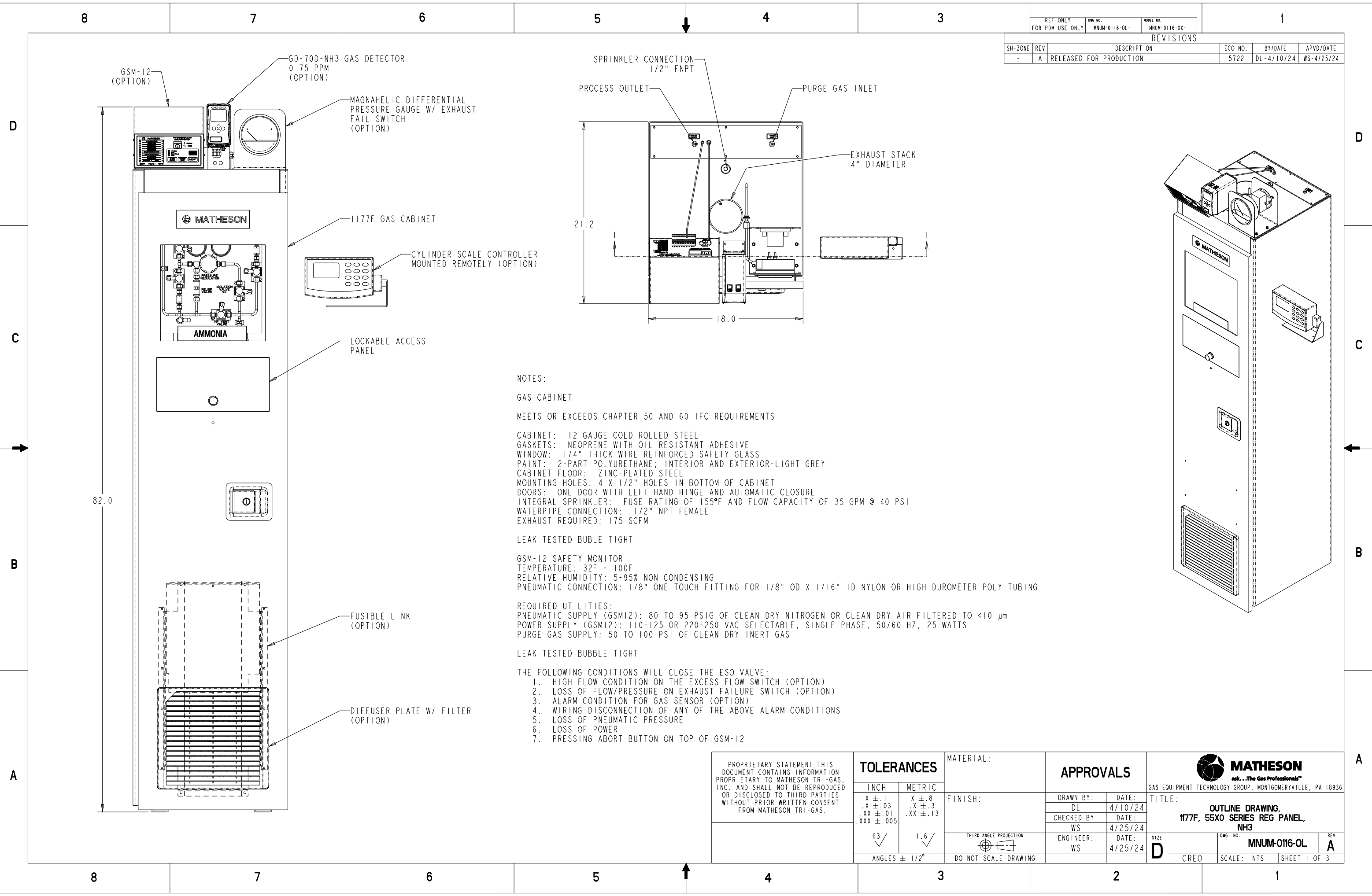


| | | | | | |
|------------------------------|-----|-------------------------|---------------------------|------------|------------|
| REF ONLY FOR PDM USE ONLY | | DWG NO. MNUM-0116-OL | MODEL NO. MNUM-0116-XX | | |
| REVISIONS | | | | | |
| SH-ZONE | REV | DESCRIPTION | ECO NO. | BY/DATE | APVD/DATE |
| - | A | RELEASED FOR PRODUCTION | 5722 | DL-4/10/24 | WS-4/25/24 |



NOTES:

GAS CABINET

MEETS OR EXCEEDS CHAPTER 50 AND 60 IFC REQUIREMENTS

CABINET: 12 GAUGE COLD ROLLED STEEL
 GASKETS: NEOPRENE WITH OIL RESISTANT ADHESIVE
 WINDOW: 1/4" THICK WIRE REINFORCED SAFETY GLASS
 PAINT: 2-PART POLYURETHANE; INTERIOR AND EXTERIOR-LIGHT GREY
 CABINET FLOOR: ZINC-PLATED STEEL
 MOUNTING HOLES: 4 X 1/2" HOLES IN BOTTOM OF CABINET
 DOORS: ONE DOOR WITH LEFT HAND HINGE AND AUTOMATIC CLOSURE
 INTEGRAL SPRINKLER: FUSE RATING OF 155°F AND FLOW CAPACITY OF 35 GPM @ 40 PSI
 WATERPIPE CONNECTION: 1/2" NPT FEMALE
 EXHAUST REQUIRED: 175 SCFM

LEAK TESTED BUBLE TIGHT

GSM-12 SAFETY MONITOR
 TEMPERATURE: 32F - 100F
 RELATIVE HUMIDITY: 5-95% NON CONDENSING
 PNEUMATIC CONNECTION: 1/8" ONE TOUCH FITTING FOR 1/8" OD X 1/16" ID NYLON OR HIGH DUROMETER POLY TUBING

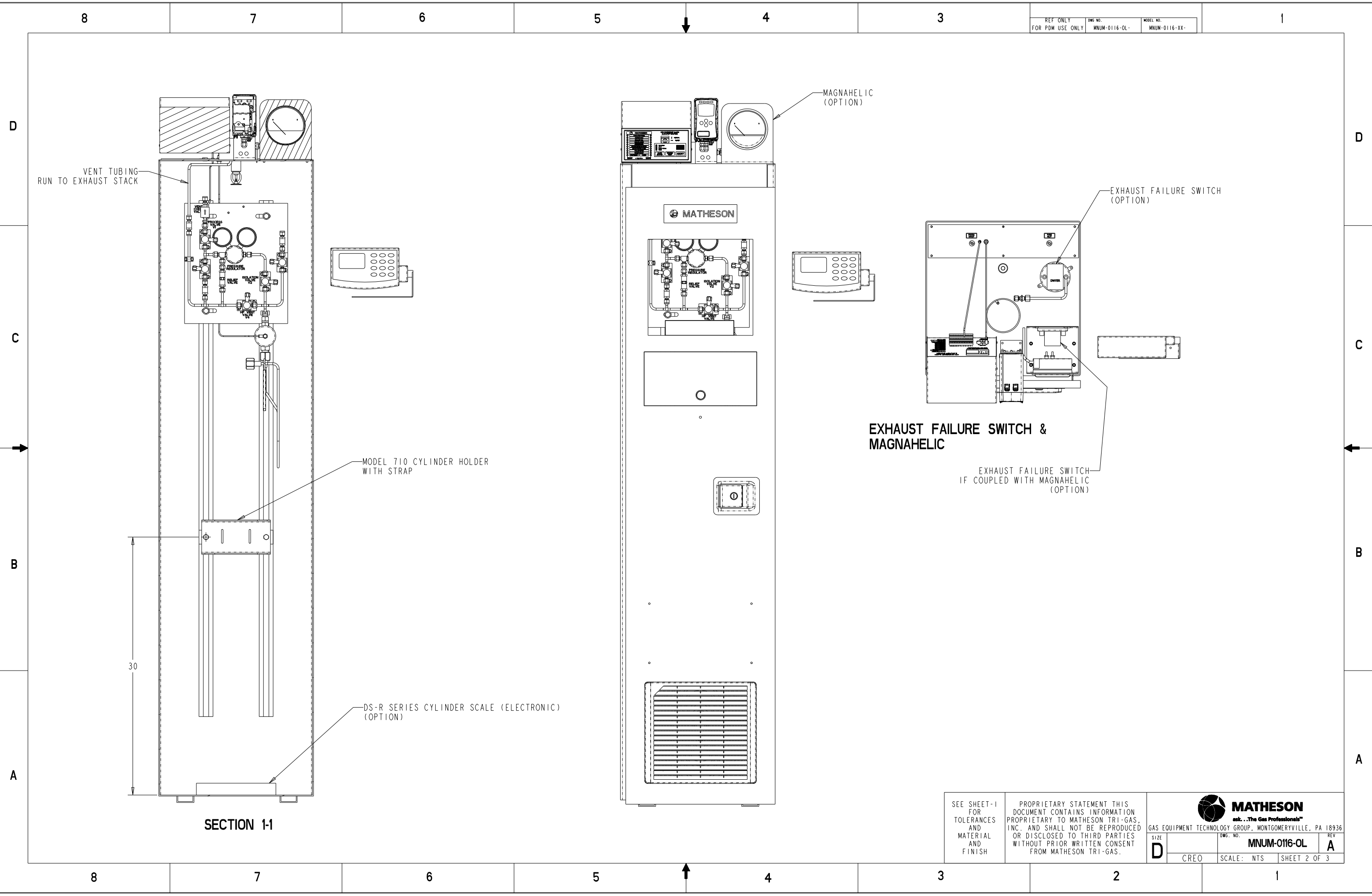
REQUIRED UTILITIES:
 PNEUMATIC SUPPLY (GSM12): 80 TO 95 PSIG OF CLEAN DRY NITROGEN OR CLEAN DRY AIR FILTERED TO <10 µm
 POWER SUPPLY (GSM12): 110-125 OR 220-250 VAC SELECTABLE, SINGLE PHASE, 50/60 HZ, 25 WATTS
 PURGE GAS SUPPLY: 50 TO 100 PSI OF CLEAN DRY INERT GAS

LEAK TESTED BUBBLE TIGHT


THE FOLLOWING CONDITIONS WILL CLOSE THE ESO VALVE:

1. HIGH FLOW CONDITION ON THE EXCESS FLOW SWITCH (OPTION)
2. LOSS OF FLOW/PRESSURE ON EXHAUST FAILURE SWITCH (OPTION)
3. ALARM CONDITION FOR GAS SENSOR (OPTION)
4. WIRING DISCONNECTION OF ANY OF THE ABOVE ALARM CONDITIONS
5. LOSS OF PNEUMATIC PRESSURE
6. LOSS OF POWER
7. PRESSING ABORT BUTTON ON TOP OF GSM-12

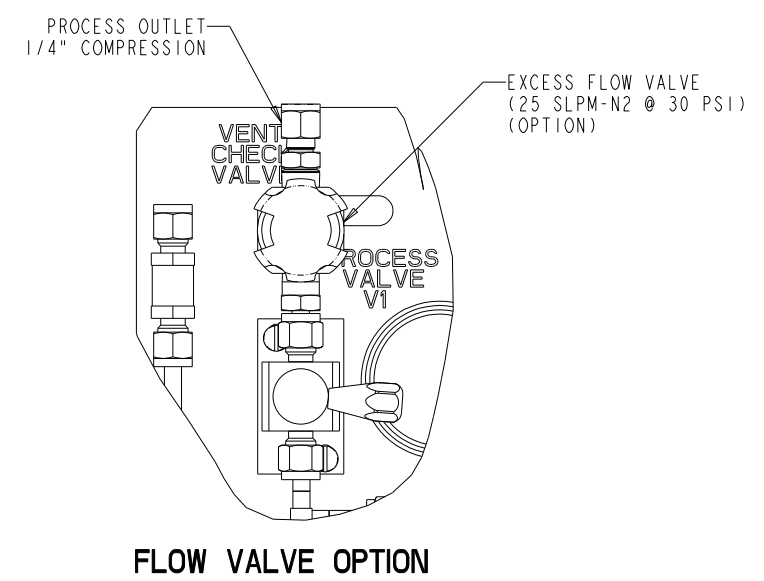
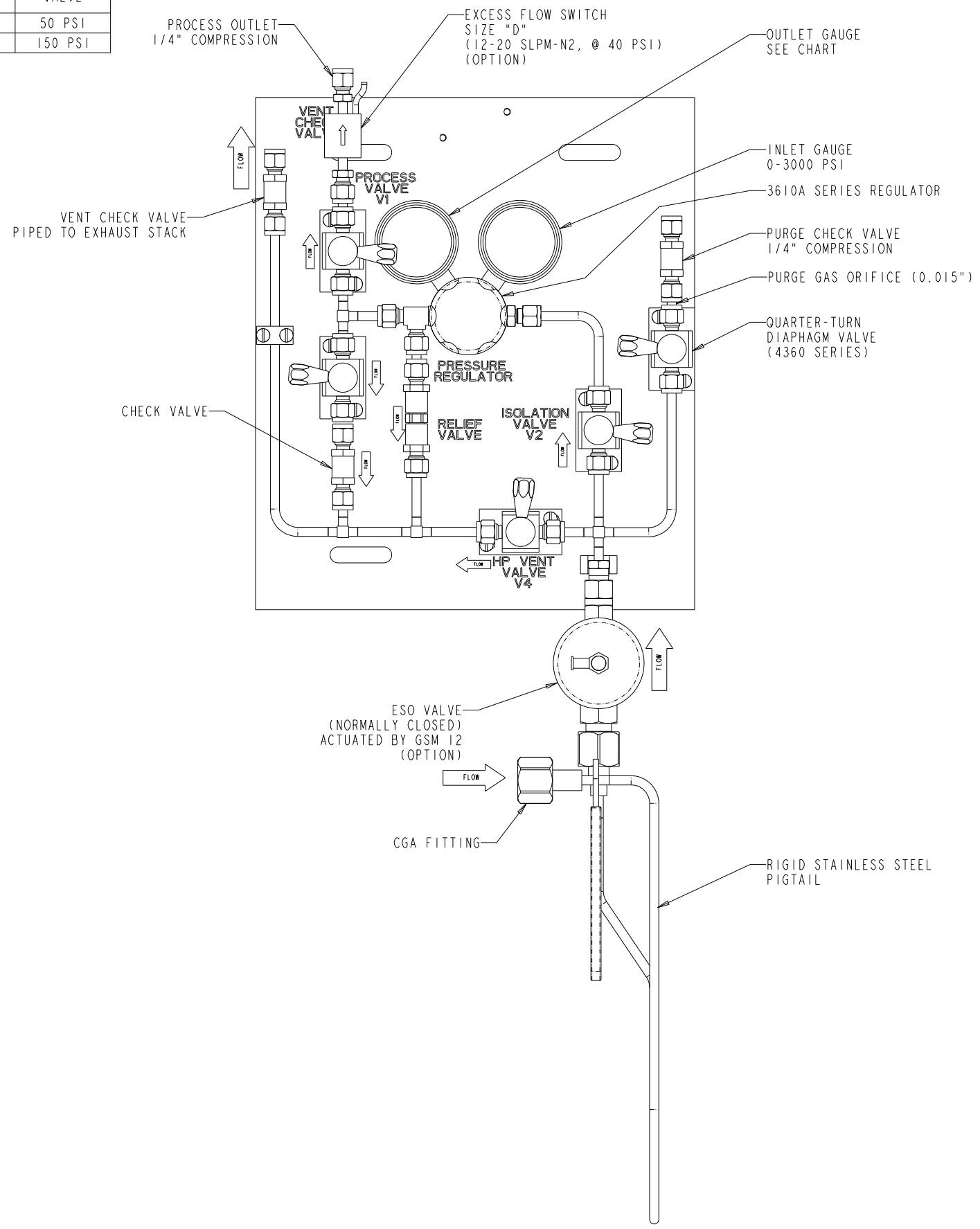
| | | | | | | |
|---|--------------------------------|---------------|--|------------------|------|---|
| PROPRIETARY STATEMENT THIS DOCUMENT CONTAINS INFORMATION PROPRIETARY TO MATHESON TRI-GAS, INC. AND SHALL NOT BE REPRODUCED OR DISCLOSED TO THIRD PARTIES WITHOUT PRIOR WRITTEN CONSENT FROM MATHESON TRI-GAS. | TOLERANCES | | MATERIAL: | APPROVALS | | MATHESON <small>ask...The Gas Professionals™</small> GAS EQUIPMENT TECHNOLOGY GROUP, MONTGOMERYVILLE, PA 18936 |
| | INCH | METRIC | | | | |
| x ± .1 .x ± .03 .xx ± .01 .xxx ± .005 | x ± .8 .x ± .3 .xx ± .13 | 63 ✓ 1.6 ✓ | THIRD ANGLE PROJECTION DO NOT SCALE DRAWING | SIZE D | CREO | DWG. NO. MNUM-0116-OL SCALE: NTS SHEET 1 OF 3 |



SECTION 1-1

| | | | |
|--|---|---|------|
| SEE SHEET-1 FOR TOLERANCES AND MATERIAL AND FINISH | PROPRIETARY STATEMENT THIS DOCUMENT CONTAINS INFORMATION PROPRIETARY TO MATHESON TRI-GAS, INC. AND SHALL NOT BE REPRODUCED OR DISCLOSED TO THIRD PARTIES WITHOUT PRIOR WRITTEN CONSENT FROM MATHESON TRI-GAS. |  MATHESON <small>ask...The Gas Professionals™</small> | |
| | | GAS EQUIPMENT TECHNOLOGY GROUP, MONTGOMERYVILLE, PA 18936 | |
| SIZE D | DWG. NO. MNUM-0116-OL | REV A | CREO |
| SCALE: NTS | | SHEET 2 OF 3 | |

| MODEL NO. | MAX DELIVERY PRESSURE | DELIVERY PRESSURE GAUGE | RELIEF VALVE |
|-----------|-----------------------|-------------------------|--------------|
| MPAN-5500 | 30 PSI | -30" Hg-0-60 PSI | 50 PSI |
| MPAN-5510 | 100 PSI | -30" Hg-0-200 PSI | 150 PSI |



| MATERIALS | |
|--------------------------|-------------------------------|
| REGULATOR BODY | 316L STAINLESS STEEL |
| REGULATOR BONNET | 316 STAINLESS STEEL |
| REGULATOR DIAPHRAGMS | 316 STAINLESS STEEL |
| REGULATOR SEAT | PCTFE |
| REGULATOR SEALS | METAL TO METAL |
| VALVE BODY (4360 SERIES) | 316L STAINLESS STEEL BARSTOCK |
| VALVE DIAPHRAGM | 316L STAINLESS STEEL |
| VALVE SEAT | PCTFE |
| CHECK VALVE BODY | 316 STAINLESS STEEL |
| CHECK VALVE O-RING | FFKM |
| RELIEF VALVE BODY | 316 STAINLESS STEEL |
| RELIEF VALVE O-RING | FFKM |
| GAUGES | 316L STAINLESS STEEL |
| TUBING AND FITTINGS | STAINLESS STEEL |
| FLEX HOSE | STAINLESS STEEL |

| SPECIFICATIONS | |
|--|--------------------------------|
| MAXIMUM INLET PRESSURE | 3000 PSI (20,700 kPa) |
| FLOW CAPACITY-REGULATOR (Cv) | 0.09 |
| OPERATING TEMPERATURE | -10°F TO 160°F (-23°C TO 71°C) |
| VALVE FLOW CAPACITY (Cv) | 0.13 |
| CLEANING | CGA G 4.1 |
| PRESSURE RATING | PER ANSI/ASME B31.3 |
| TYP MAX FLOW (100 PSI DEL. PRESS.) | 2 SCFM-N2 (57 SLPM) |
| CONFORMS TO CGA E-4 STANDARD FOR GAS PRESSURE REGULATORS | |

SEE SHEET-1 FOR TOLERANCES AND MATERIAL AND FINISH

PROPRIETARY STATEMENT THIS DOCUMENT CONTAINS INFORMATION PROPRIETARY TO MATHESON TRI-GAS, INC. AND SHALL NOT BE REPRODUCED OR DISCLOSED TO THIRD PARTIES WITHOUT PRIOR WRITTEN CONSENT FROM MATHESON TRI-GAS.

MATHESON
ask...The Gas Professionals™
GAS EQUIPMENT TECHNOLOGY GROUP, MONTGOMERYVILLE, PA 18936

| | | |
|------------------|---------------------------------|-----------------|
| SIZE D | DWG. NO. MNUM-0116-OL | REV A |
| CREO | SCALE: NTS | SHEET 3 OF 3 |