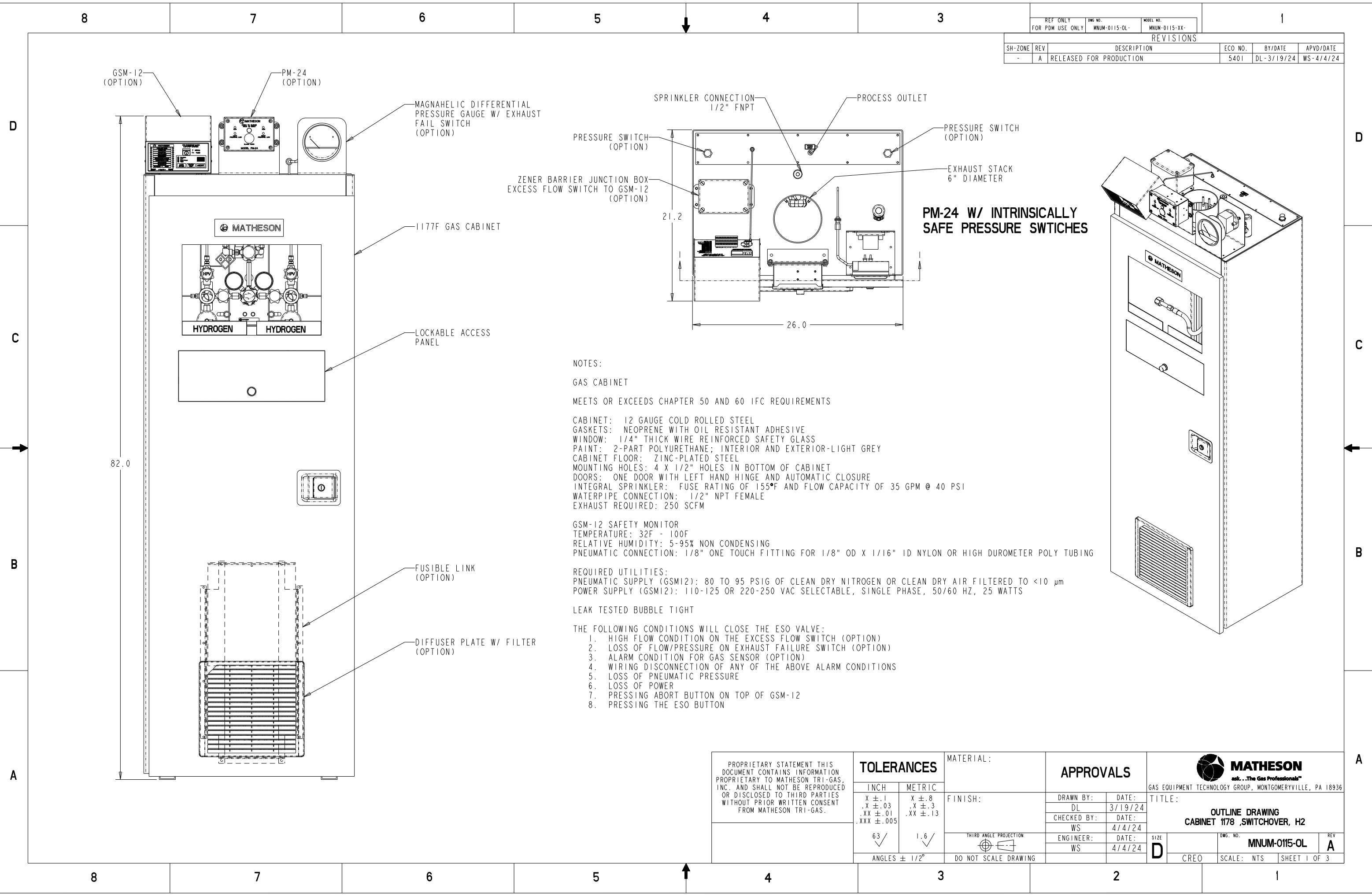


REF ONLY FOR PDM USE ONLY		DWG NO. MNUM-0115-OL	MODEL NO. MNUM-0115-XX		
REVISIONS					
SH-ZONE	REV	DESCRIPTION	ECO NO.	BY/DATE	APVD/DATE
-	A	RELEASED FOR PRODUCTION	5401	DL-3/19/24	WS-4/4/24



NOTES:

GAS CABINET

MEETS OR EXCEEDS CHAPTER 50 AND 60 IFC REQUIREMENTS

CABINET: 12 GAUGE COLD ROLLED STEEL
 GASKETS: NEOPRENE WITH OIL RESISTANT ADHESIVE
 WINDOW: 1/4" THICK WIRE REINFORCED SAFETY GLASS
 PAINT: 2-PART POLYURETHANE; INTERIOR AND EXTERIOR-LIGHT GREY
 CABINET FLOOR: ZINC-PLATED STEEL
 MOUNTING HOLES: 4 X 1/2" HOLES IN BOTTOM OF CABINET
 DOORS: ONE DOOR WITH LEFT HAND HINGE AND AUTOMATIC CLOSURE
 INTEGRAL SPRINKLER: FUSE RATING OF 155°F AND FLOW CAPACITY OF 35 GPM @ 40 PSI
 WATERPIPE CONNECTION: 1/2" NPT FEMALE
 EXHAUST REQUIRED: 250 SCFM

GSM-12 SAFETY MONITOR
 TEMPERATURE: 32F - 100F
 RELATIVE HUMIDITY: 5-95% NON CONDENSING
 PNEUMATIC CONNECTION: 1/8" ONE TOUCH FITTING FOR 1/8" OD X 1/16" ID NYLON OR HIGH DUROMETER POLY TUBING

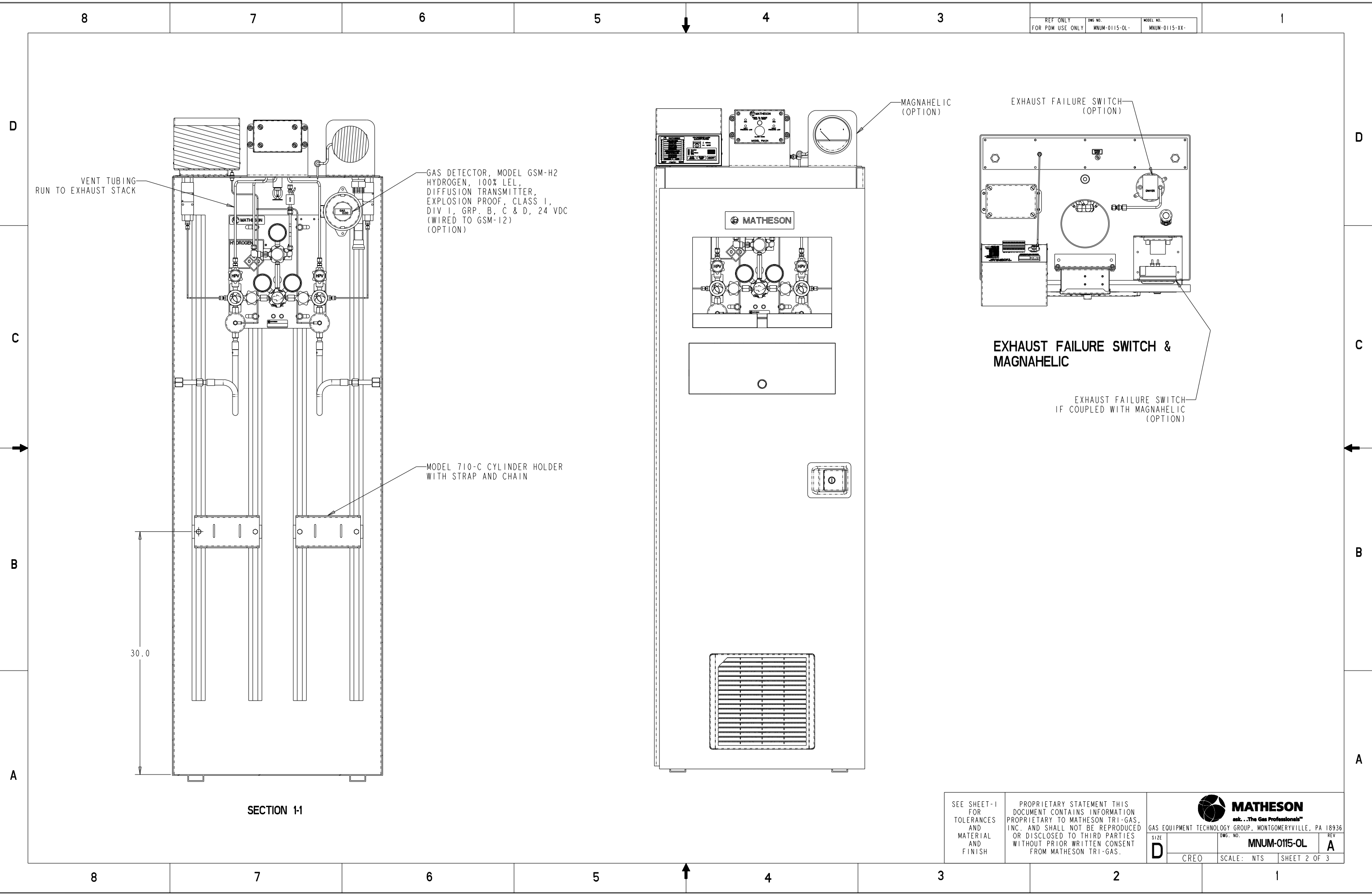
REQUIRED UTILITIES:
 PNEUMATIC SUPPLY (GSM12): 80 TO 95 PSIG OF CLEAN DRY NITROGEN OR CLEAN DRY AIR FILTERED TO <10 µm
 POWER SUPPLY (GSM12): 110-125 OR 220-250 VAC SELECTABLE, SINGLE PHASE, 50/60 HZ, 25 WATTS

LEAK TESTED BUBBLE TIGHT

THE FOLLOWING CONDITIONS WILL CLOSE THE ESO VALVE:

1. HIGH FLOW CONDITION ON THE EXCESS FLOW SWITCH (OPTION)
2. LOSS OF FLOW/PRESSURE ON EXHAUST FAILURE SWITCH (OPTION)
3. ALARM CONDITION FOR GAS SENSOR (OPTION)
4. WIRING DISCONNECTION OF ANY OF THE ABOVE ALARM CONDITIONS
5. LOSS OF PNEUMATIC PRESSURE
6. LOSS OF POWER
7. PRESSING ABORT BUTTON ON TOP OF GSM-12
8. PRESSING THE ESO BUTTON

PROPRIETARY STATEMENT THIS DOCUMENT CONTAINS INFORMATION PROPRIETARY TO MATHESON TRI-GAS, INC. AND SHALL NOT BE REPRODUCED OR DISCLOSED TO THIRD PARTIES WITHOUT PRIOR WRITTEN CONSENT FROM MATHESON TRI-GAS.	TOLERANCES		MATERIAL: FINISH: THIRD ANGLE PROJECTION DO NOT SCALE DRAWING	APPROVALS		MATHESON <small>ask...The Gas Professionals™</small> GAS EQUIPMENT TECHNOLOGY GROUP, MONTGOMERYVILLE, PA 18936 TITLE: OUTLINE DRAWING CABINET 1178 ,SWITCHOVER, H2																								
	<table border="1"> <tr> <th>INCH</th> <th>METRIC</th> </tr> <tr> <td>x ± .1</td> <td>x ± .8</td> </tr> <tr> <td>.x ± .03</td> <td>.x ± .3</td> </tr> <tr> <td>.xx ± .01</td> <td>.xx ± .13</td> </tr> <tr> <td>.xxx ± .005</td> <td></td> </tr> </table>	INCH		METRIC	x ± .1		x ± .8	.x ± .03	.x ± .3	.xx ± .01	.xx ± .13	.xxx ± .005		<table border="1"> <tr> <td>63 ✓</td> <td>1.6 ✓</td> </tr> <tr> <td colspan="2">ANGLES ± 1/2°</td> </tr> </table>	63 ✓	1.6 ✓	ANGLES ± 1/2°		<table border="1"> <tr> <td>DRAWN BY:</td> <td>DATE:</td> </tr> <tr> <td>DL</td> <td>3/19/24</td> </tr> <tr> <td>CHECKED BY:</td> <td>DATE:</td> </tr> <tr> <td>WS</td> <td>4/4/24</td> </tr> <tr> <td>ENGINEER:</td> <td>DATE:</td> </tr> <tr> <td>WS</td> <td>4/4/24</td> </tr> </table>	DRAWN BY:	DATE:	DL	3/19/24	CHECKED BY:	DATE:	WS	4/4/24	ENGINEER:	DATE:	WS
INCH	METRIC																													
x ± .1	x ± .8																													
.x ± .03	.x ± .3																													
.xx ± .01	.xx ± .13																													
.xxx ± .005																														
63 ✓	1.6 ✓																													
ANGLES ± 1/2°																														
DRAWN BY:	DATE:																													
DL	3/19/24																													
CHECKED BY:	DATE:																													
WS	4/4/24																													
ENGINEER:	DATE:																													
WS	4/4/24																													



GAS DETECTOR, MODEL GSM-H2
HYDROGEN, 100% LEL,
DIFFUSION TRANSMITTER,
EXPLOSION PROOF, CLASS I,
DIV 1, GRP. B, C & D, 24 VDC
(WIRED TO GSM-12)
(OPTION)

MODEL 710-C CYLINDER HOLDER
WITH STRAP AND CHAIN

MAGNAHELIC
(OPTION)


EXHAUST FAILURE SWITCH
(OPTION)

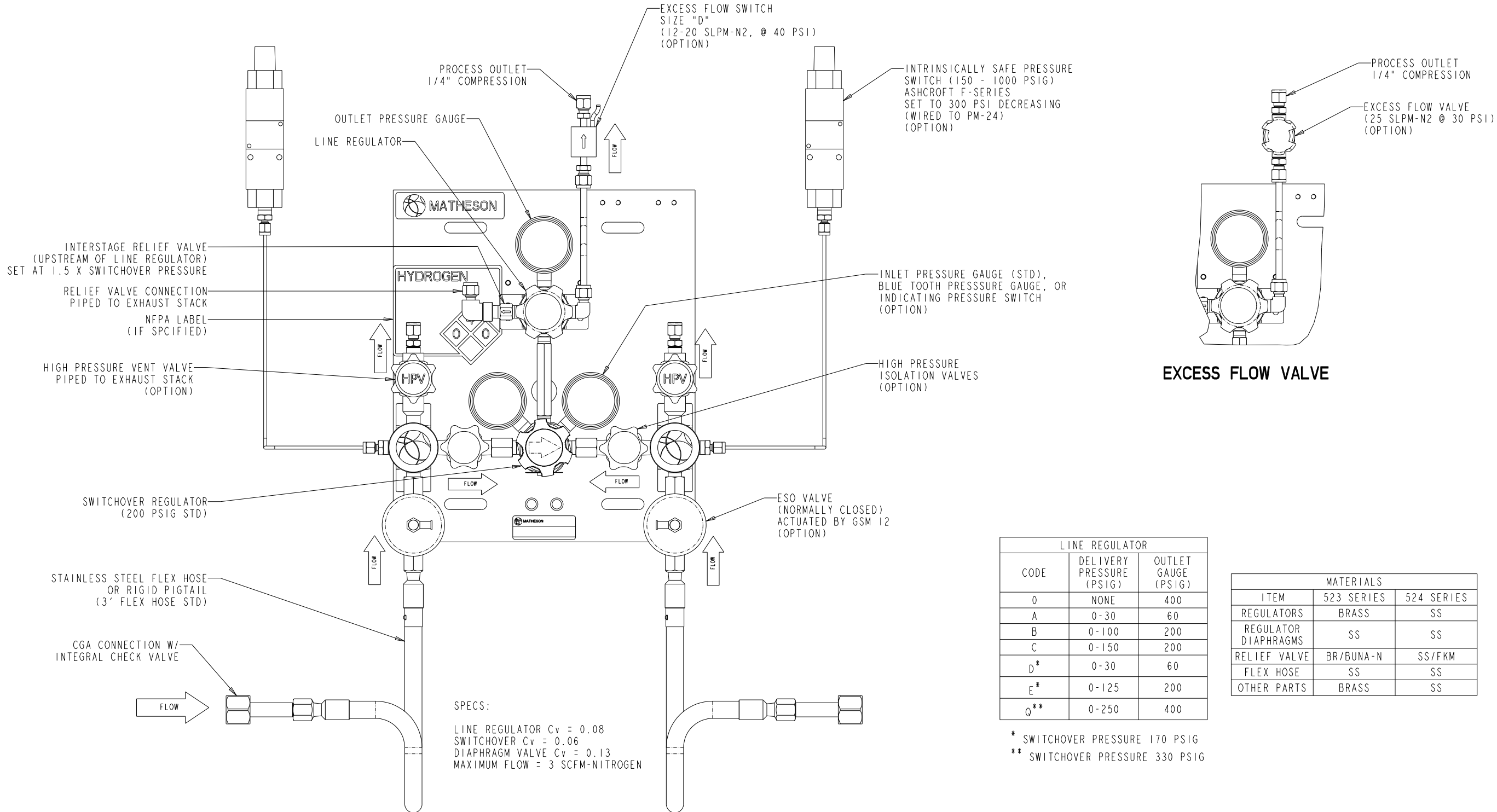
**EXHAUST FAILURE SWITCH &
MAGNAHELIC**

EXHAUST FAILURE SWITCH
IF COUPLED WITH MAGNAHELIC
(OPTION)

30.0

SECTION 1-1

SEE SHEET-1 FOR TOLERANCES AND MATERIAL AND FINISH	PROPRIETARY STATEMENT THIS DOCUMENT CONTAINS INFORMATION PROPRIETARY TO MATHESON TRI-GAS, INC. AND SHALL NOT BE REPRODUCED OR DISCLOSED TO THIRD PARTIES WITHOUT PRIOR WRITTEN CONSENT FROM MATHESON TRI-GAS.	 MATHESON <small>ask...The Gas Professionals™</small>	
		GAS EQUIPMENT TECHNOLOGY GROUP, MONTGOMERYVILLE, PA 18936	
SIZE D	DWG. NO. MNUM-0115-OL	REV A	CREO
SCALE: NTS		SHEET 2 OF 3	



SPECS:
 LINE REGULATOR Cv = 0.08
 SWITCHOVER Cv = 0.06
 DIAPHRAGM VALVE Cv = 0.13
 MAXIMUM FLOW = 3 SCFM-NITROGEN

EXCESS FLOW VALVE

LINE REGULATOR		
CODE	DELIVERY PRESSURE (PSIG)	OUTLET GAUGE (PSIG)
0	NONE	400
A	0-30	60
B	0-100	200
C	0-150	200
D*	0-30	60
E*	0-125	200
0**	0-250	400

* SWITCHOVER PRESSURE 170 PSIG
 ** SWITCHOVER PRESSURE 330 PSIG

MATERIALS		
ITEM	523 SERIES	524 SERIES
REGULATORS	BRASS	SS
REGULATOR DIAPHRAGMS	SS	SS
RELIEF VALVE	BR/BUNA-N	SS/FKM
FLEX HOSE	SS	SS
OTHER PARTS	BRASS	SS

SWITCHOVER CONFIGURATION MAY VARY BASED ON OPTIONS

SEE SHEET-1 FOR TOLERANCES AND MATERIAL AND FINISH

PROPRIETARY STATEMENT THIS DOCUMENT CONTAINS INFORMATION PROPRIETARY TO MATHESON TRI-GAS, INC. AND SHALL NOT BE REPRODUCED OR DISCLOSED TO THIRD PARTIES WITHOUT PRIOR WRITTEN CONSENT FROM MATHESON TRI-GAS.

MATHESON
ask...The Gas Professionals™
 GAS EQUIPMENT TECHNOLOGY GROUP, MONTGOMERYVILLE, PA 18936

SIZE D	DWG. NO. MNUM-0115-OL	REV A
CREO	SCALE: NTS	SHEET 3 OF 3