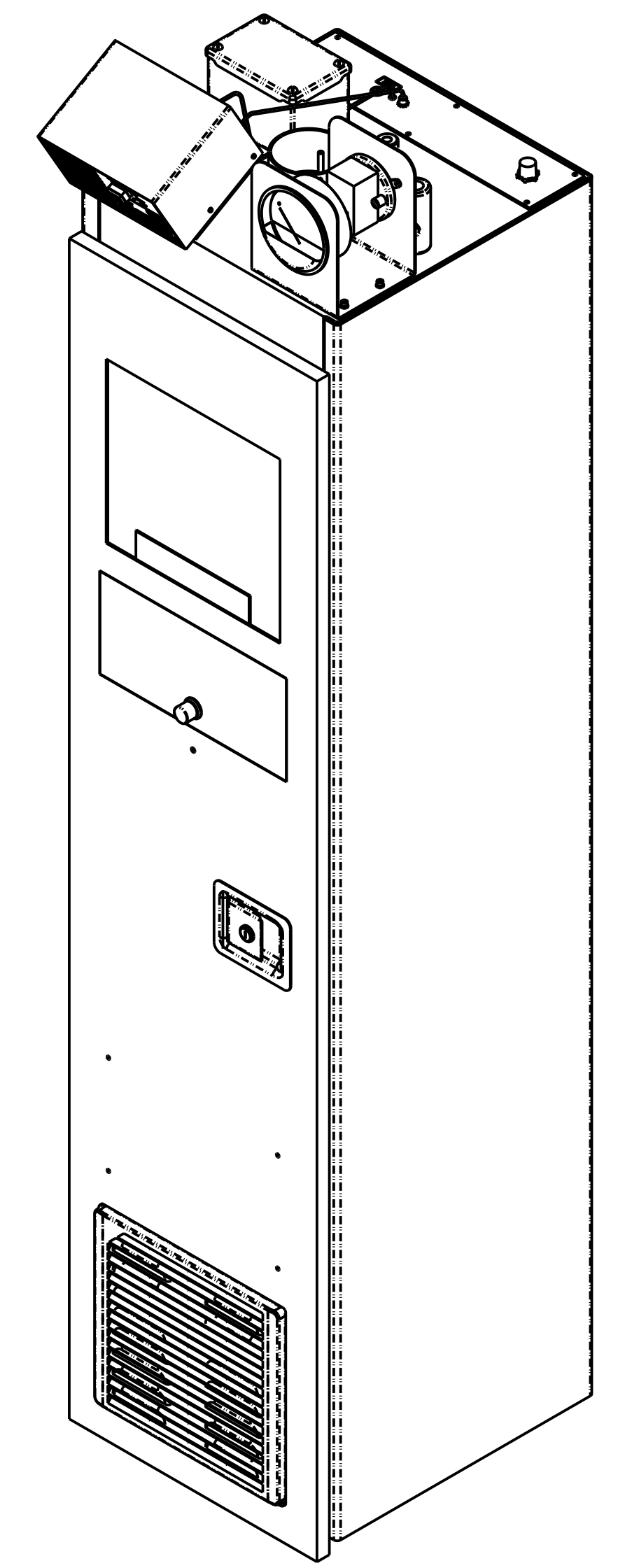
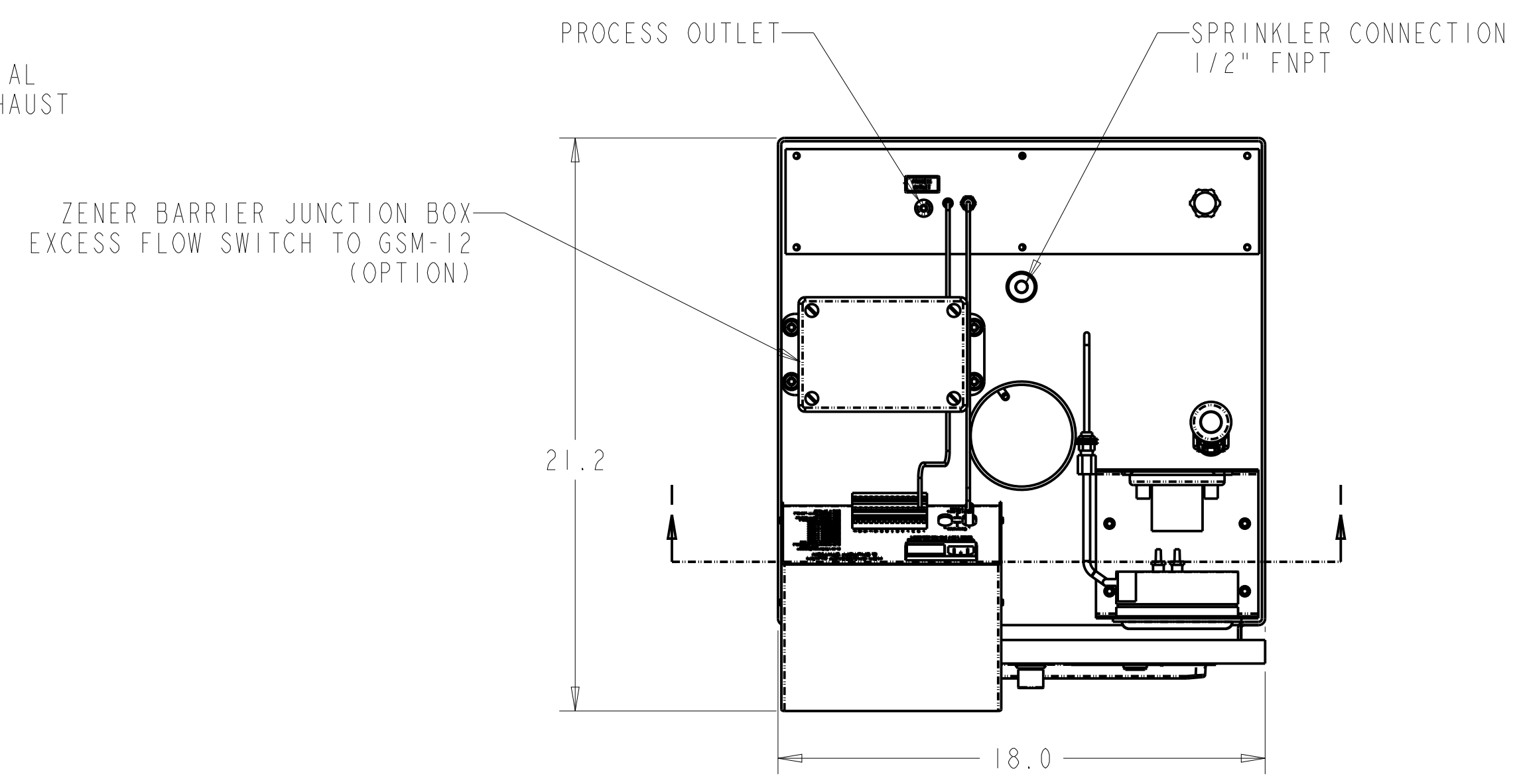
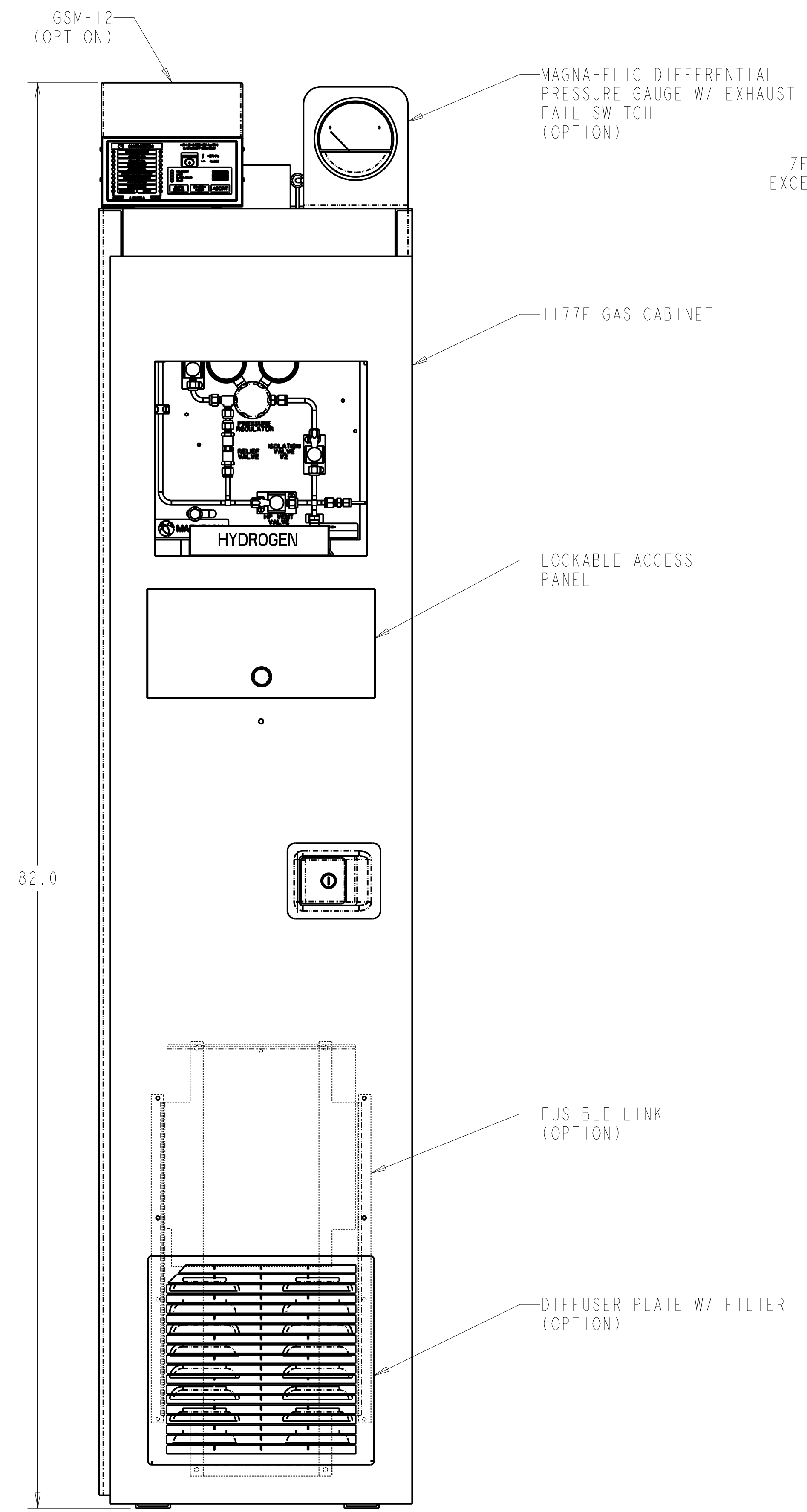


REF ONLY FOR PDM USE ONLY	DWG NO. MNUM-0114-OL	MODEL NO. MNUM-0114-XX-	REVISIONS		
SH-ZONE	REV	DESCRIPTION	ECO NO.	BY/DATE	APVD/DATE
-	A	RELEASED FOR PRODUCTION	5688	DL-2/26/24	WS-3/12/24



NOTES:

GAS CABINET

MEETS OR EXCEEDS CHAPTER 50 AND 60 IFC REQUIREMENTS

CABINET: 12 GAUGE COLD ROLLED STEEL
 GASKETS: NEOPRENE WITH OIL RESISTANT ADHESIVE
 WINDOW: 1/4" THICK WIRE REINFORCED SAFETY GLASS
 PAINT: 2-PART POLYURETHANE; INTERIOR AND EXTERIOR-LIGHT GREY
 CABINET FLOOR: ZINC-PLATED STEEL
 MOUNTING HOLES: 4 X 1/2" HOLES IN BOTTOM OF CABINET
 DOORS: ONE DOOR WITH LEFT HAND HINGE AND AUTOMATIC CLOSURE
 INTEGRAL SPRINKLER: FUSE RATING OF 155°F AND FLOW CAPACITY OF 35 GPM @ 40 PSI
 WATERPIPE CONNECTION: 1/2" NPT FEMALE
 EXHAUST REQUIRED: 175 SCFM

LEAK TESTED BUBLE TIGHT

GSM-12 SAFETY MONITOR
 TEMPERATURE: 32F - 100F
 RELATIVE HUMIDITY: 5-95% NON CONDENSING
 PNEUMATIC CONNECTION: 1/8" ONE TOUCH FITTING FOR 1/8" OD X 1/16" ID NYLON OR HIGH DUROMETER POLY TUBING

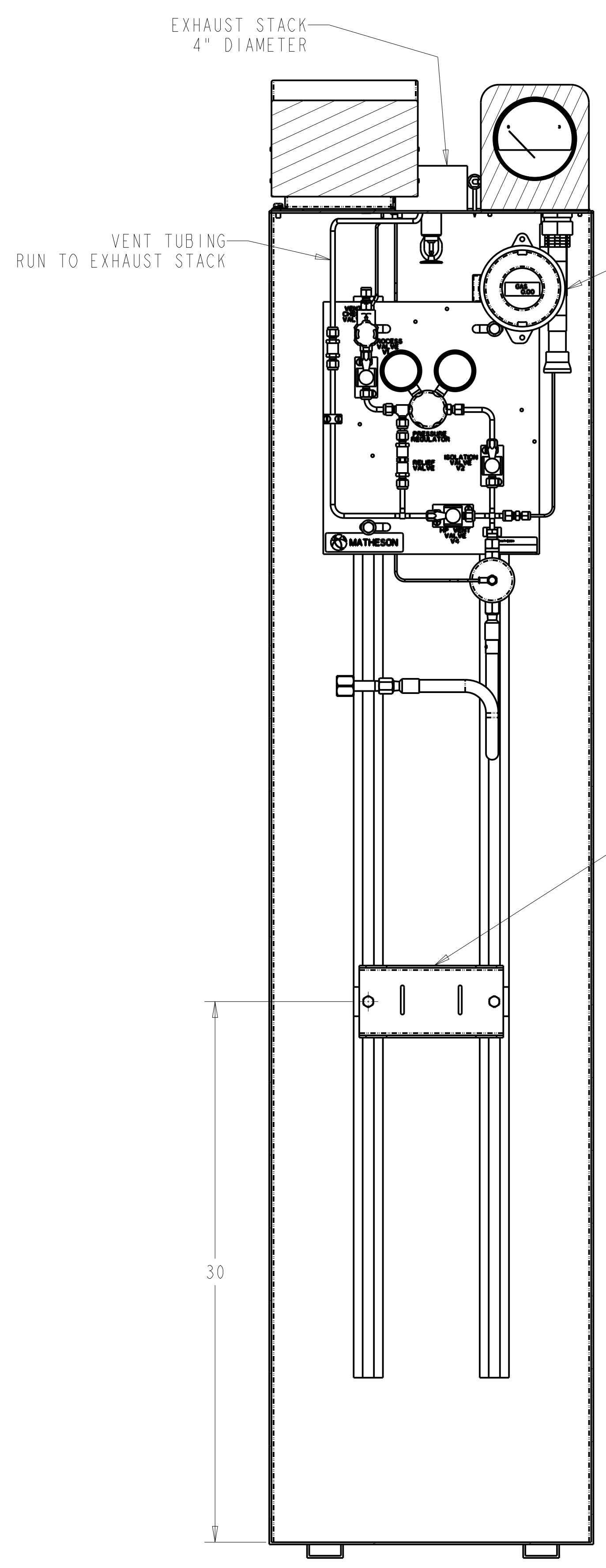
REQUIRED UTILITIES:
 PNEUMATIC SUPPLY (GSM12): 80 TO 95 PSIG OF CLEAN DRY NITROGEN OR CLEAN DRY AIR FILTERED TO <10 µm
 POWER SUPPLY (GSM12): 110-125 OR 220-250 VAC SELECTABLE, SINGLE PHASE, 50/60 HZ, 25 WATTS

LEAK TESTED BUBLE TIGHT

THE FOLLOWING CONDITIONS WILL CLOSE THE ESO VALVE:

1. HIGH FLOW CONDITION ON THE EXCESS FLOW SWITCH (OPTION)
2. LOSS OF FLOW/PRESSURE ON EXHAUST FAILURE SWITCH (OPTION)
3. ALARM CONDITION FOR GAS SENSOR (OPTION)
4. WIRING DISCONNECTION OF ANY OF THE ABOVE ALARM CONDITIONS
5. LOSS OF PNEUMATIC PRESSURE
6. LOSS OF POWER
7. PRESSING ABORT BUTTON ON TOP OF GSM-12
8. PRESSING THE ESO BUTTON

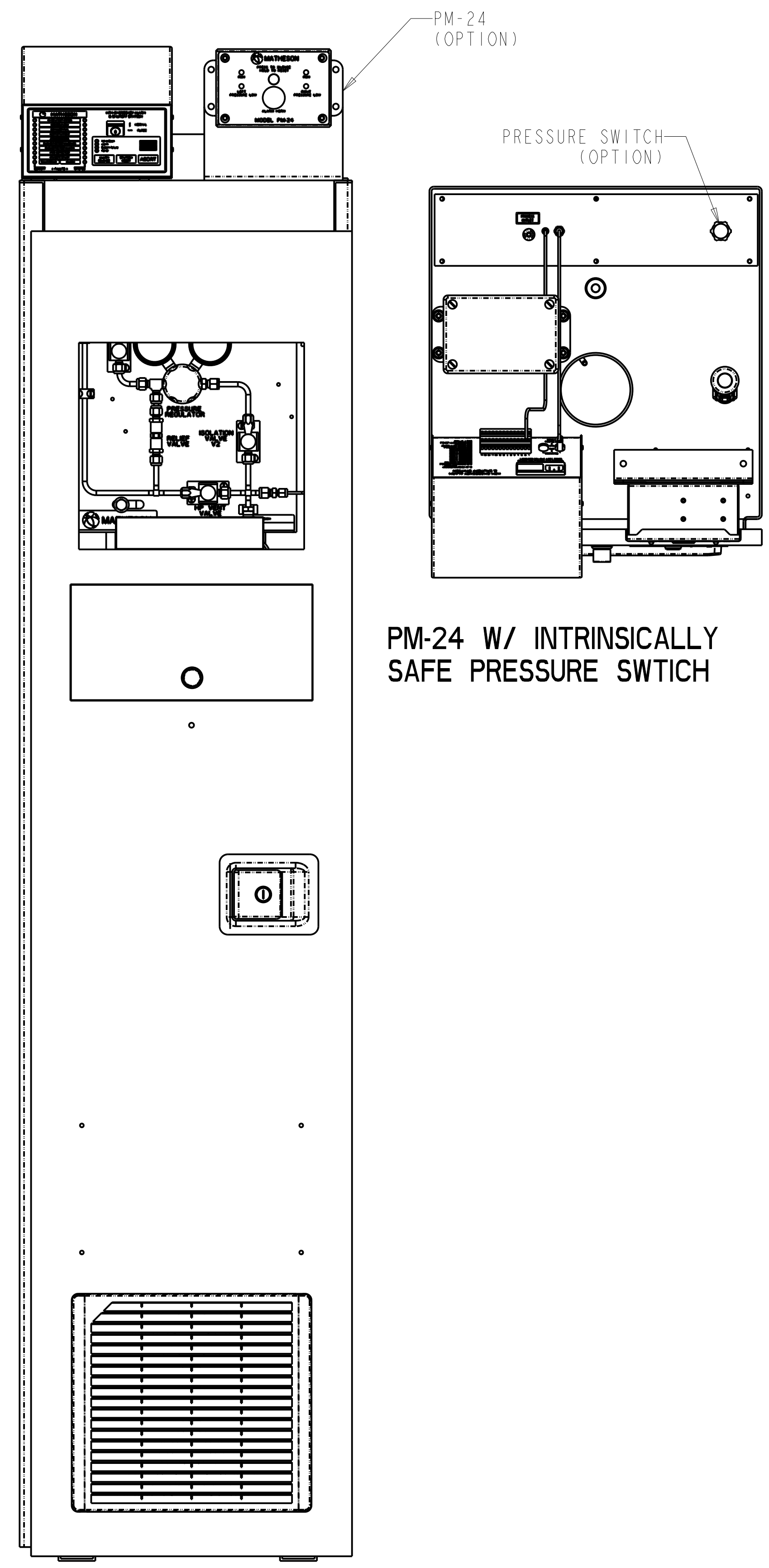
PROPRIETARY STATEMENT THIS DOCUMENT CONTAINS INFORMATION PROPRIETARY TO MATHESON TRI-GAS, INC. AND SHALL NOT BE REPRODUCED OR DISCLOSED TO THIRD PARTIES WITHOUT PRIOR WRITTEN CONSENT FROM MATHESON TRI-GAS.	TOLERANCES		MATERIAL:	APPROVALS		 ask...The Gas Professionals™ GAS EQUIPMENT TECHNOLOGY GROUP, MONTGOMERYVILLE, PA 18936
	INCH	METRIC				
	X ± .1 .X ± .03 .XX ± .01 .XXX ± .005	X ± .8 .X ± .3 .XX ± .13		DL	2/26/24	TITLE:
	63 ✓	1.6 ✓	THIRD ANGLE PROJECTION	WS	3/12/24	OUTLINE DRAWING, 1177F, 53X0 SERIES REG PANEL, H2
	ANGLES ± 1/2°		DO NOT SCALE DRAWING	ENGINEER:	DATE:	SIZE
				WS	3/12/24	D
				CREO	SCALE: NTS	SHEET 1 OF 3



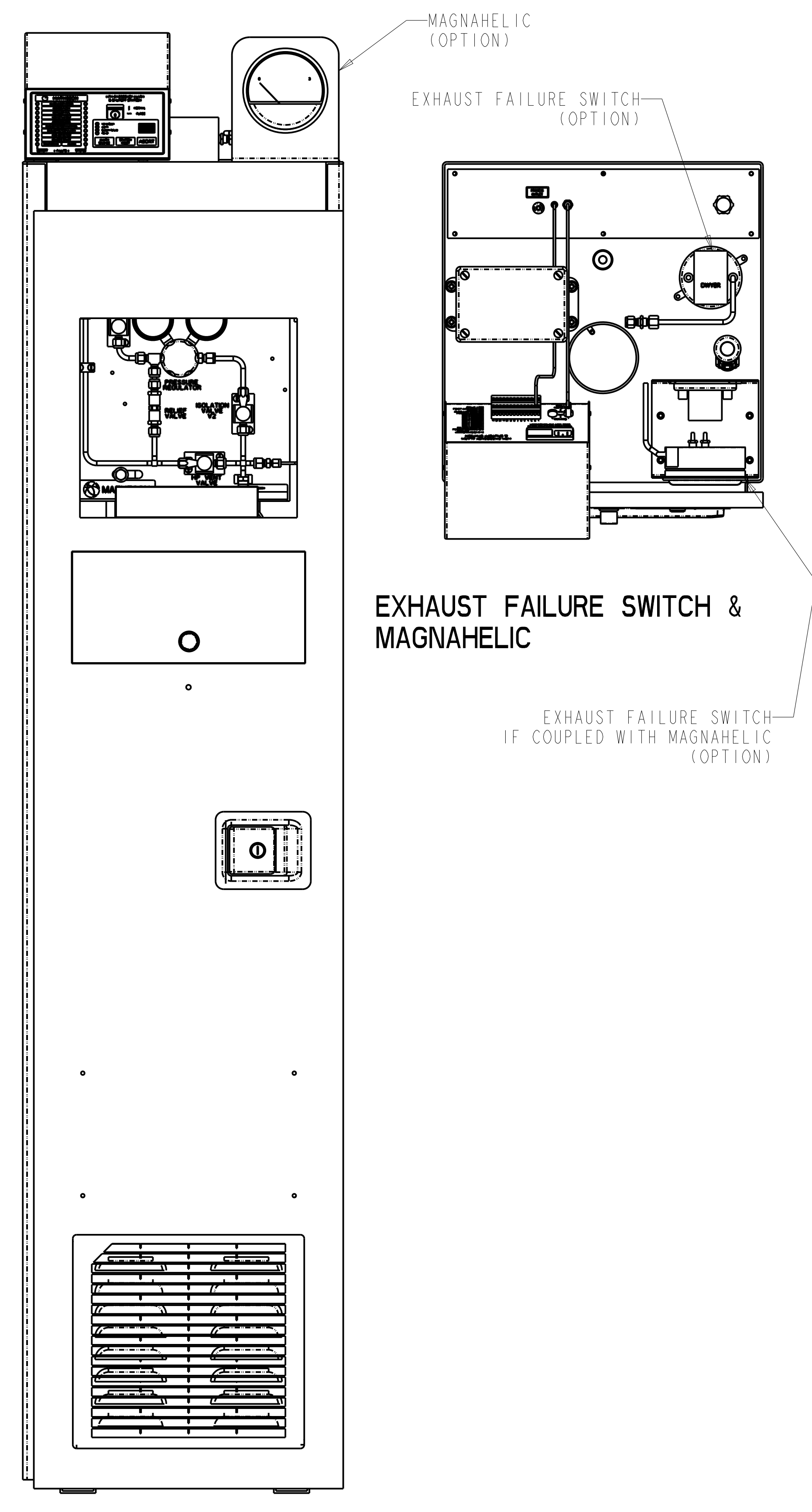
GAS DETECTOR, MODEL GSM-H2
HYDROGEN, 100% LEL,
DIFFUSION TRANSMITTER,
EXPLOSION PROOF, CLASS I,
DIV 1, GRP. B, C & D, 24 VDC
(WIRED TO GSM-12)
(OPTION)

MODEL 710-C CYLINDER HOLDER
WITH STRAP AND CHAIN

SECTION 1-1



PM-24 W/ INTRINSICALLY
SAFE PRESSURE SWITCH



EXHAUST FAILURE SWITCH &
MAGNAHELIC

EXHAUST FAILURE SWITCH
IF COUPLED WITH MAGNAHELIC
(OPTION)

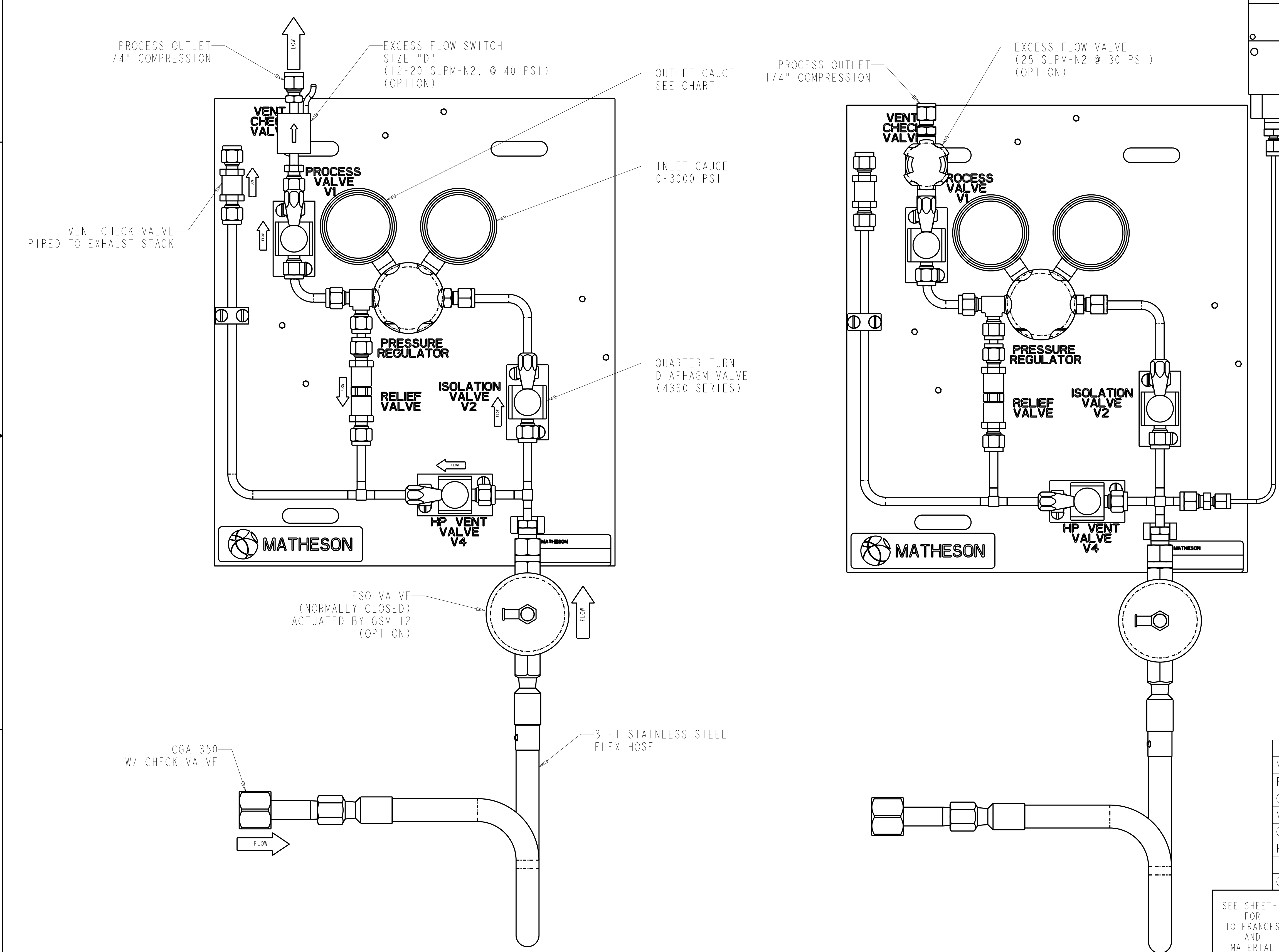
SEE SHEET-1
FOR
TOLERANCES
AND
MATERIAL
AND
FINISH

PROPRIETARY STATEMENT THIS
DOCUMENT CONTAINS INFORMATION
PROPRIETARY TO MATHESON TRI-GAS,
INC. AND SHALL NOT BE REPRODUCED
OR DISCLOSED TO THIRD PARTIES
WITHOUT PRIOR WRITTEN CONSENT
FROM MATHESON TRI-GAS.

<p>MATHESON ask...The Gas Professionals™</p>		GAS EQUIPMENT TECHNOLOGY GROUP, MONTGOMERYVILLE, PA 18936	
		SIZE D	DWG. NO. MNUM-0114-OL
CREO		SCALE: NTS	SHEET 2 OF 3

MODEL NO.	MAX DELIVERY PRESSURE	DELIVERY PRESSURE GAUGE	RELIEF VALVE
MPAN-5300	30 PSI	-30" Hg-0-60 PSI	50 PSI
MPAN-5310	100 PSI	-30" Hg-0-200 PSI	150 PSI

REF ONLY FOR PDM USE ONLY	DWG NO. MNUM-0114-OL	MODEL NO. MNUM-0114-XX
---------------------------	----------------------	------------------------



INTRINSICALLY SAFE PRESSURE SWITCH (150 - 1000 PSIG)
ASHCROFT F-SERIES
SET TO 300 PSI DECREASING
(WIRED TO PM-24)
(OPTION)

MATERIALS	
REGULATOR BODY	316L STAINLESS STEEL
REGULATOR BONNET	316 STAINLESS STEEL
REGULATOR DIAPHRAGMS	316 STAINLESS STEEL
REGULATOR SEAT	PCTFE
REGULATOR SEALS	METAL TO METAL
VALVE BODY (4360 SERIES)	316L STAINLESS STEEL BARSTOCK
VALVE DIAPHRAGM	316L STAINLESS STEEL
VALVE SEAT	PCTFE
CHECK VALVE BODY	316 STAINLESS STEEL
CHECK VALVE O-RING	FFKM
RELIEF VALVE BODY	316 STAINLESS STEEL
RELIEF VALVE O-RING	FFKM
GAUGES	316L STAINLESS STEEL
TUBING AND FITTINGS	STAINLESS STEEL
FLEX HOSE	STAINLESS STEEL

SPECIFICATIONS	
MAXIMUM INLET PRESSURE	3000 PSI (20,700 kPa)
FLOW CAPACITY-REGULATOR (Cv)	0.09
OPERATING TEMPERATURE	-10°F TO 160°F (-23°C TO 71°C)
VALVE FLOW CAPACITY (Cv)	0.13
CLEANING	CGA G 4.1 & ASTM G 93
PRESSURE RATING	PER ANSI/ASME B31.3
TYP MAX FLOW (100 PSI DEL. PRESS.)	3 SCFM-N2 (80 SLPM)
CONFORMS TO CGA E-4 STANDARD FOR GAS PRESSURE REGULATORS	

SEE SHEET-1 FOR TOLERANCES AND MATERIAL AND FINISH	PROPRIETARY STATEMENT THIS DOCUMENT CONTAINS INFORMATION PROPRIETARY TO MATHESON TRI-GAS, INC. AND SHALL NOT BE REPRODUCED OR DISCLOSED TO THIRD PARTIES WITHOUT PRIOR WRITTEN CONSENT FROM MATHESON TRI-GAS.	 ask...The Gas Professionals™ GAS EQUIPMENT TECHNOLOGY GROUP, MONTGOMERYVILLE, PA 18936		SIZE	REV
				D	A
CREO		SCALE: NTS	SHEET 3 OF 3		