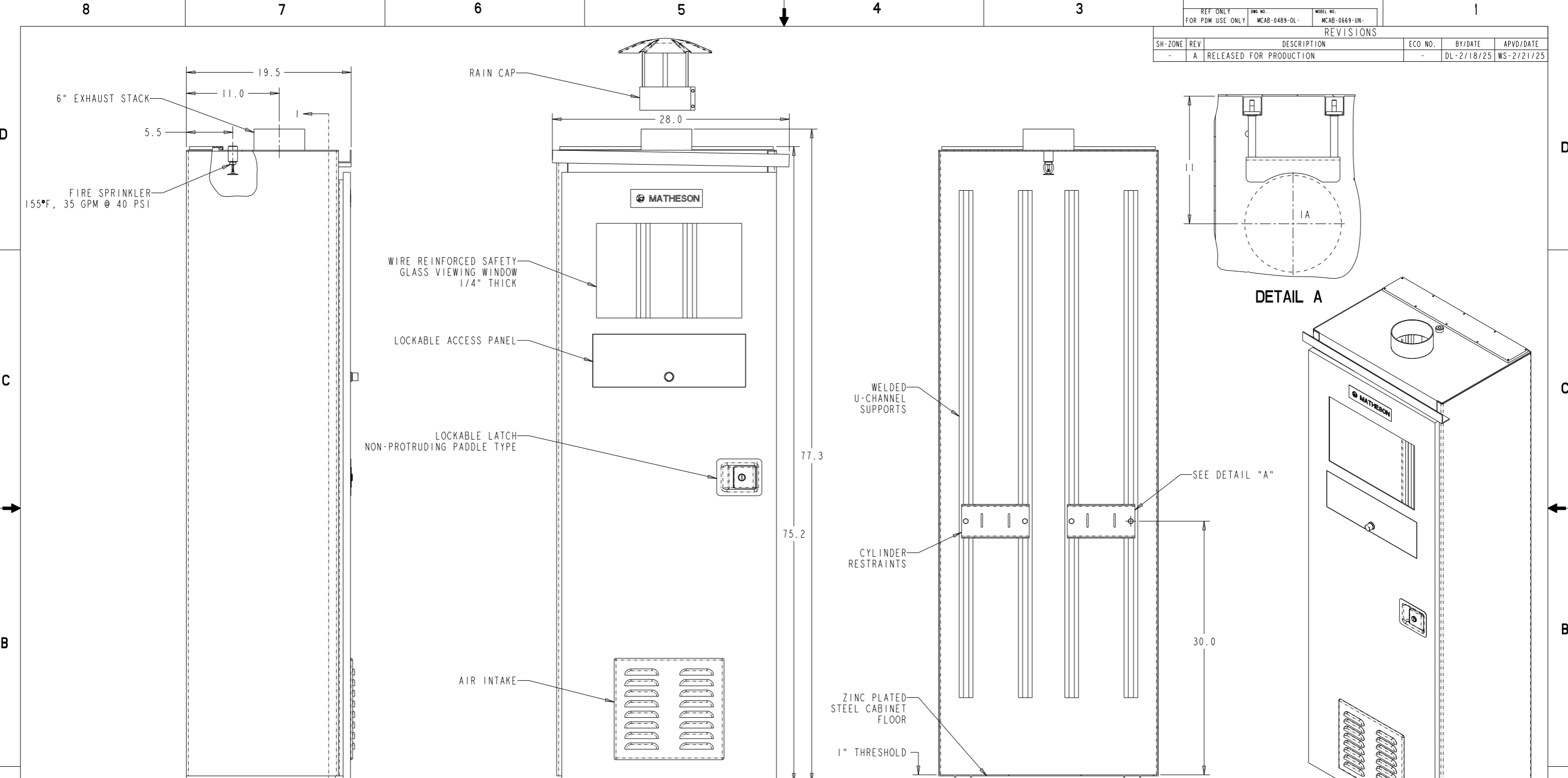


REF ONLY FOR PDM USE ONLY	DWG NO. MCAB-0489-OL	MODEL NO. MCAB-0669-UN	1		
REVISIONS			ECO NO.	BY/DATE	APVD/DATE
SH-ZONE	REV	DESCRIPTION	-	DL-2/18/25	WS-2/21/25
-	A	RELEASED FOR PRODUCTION	-		



NOTES:  
MEETS OR EXCEEDS CHAPTER 50 AND CHAPTER 60 IFC REQUIREMENTS

CABINET: 12 GAUGE COLD ROLLED STEEL  
 GASKETS: NEOPRENE WITH OIL RESISTANT ADHESIVE  
 WINDOW: 1/4" THICK WIRE REINFORCED SAFETY GLASS  
 PAINT: 2-PART POLYURETHANE; INTERIOR AND EXTERIOR-LIGHT GREY  
 CABINET FLOOR: ZINC-PLATED STEEL  
 MOUNTING HOLES: 4 X 1/2" HOLES IN BOTTOM OF CABINET  
 DOOR: ONE DOOR WITH LEFT HAND HINGE AND AUTOMATIC CLOSURE  
 INTEGRAL SPRINKLER: FUSE RATING OF 155°F AND FLOW CAPACITY OF 35 GPM @ 40 PSI  
 WATERPIPE CONNECTION: 1/2" NPT FEMALE  
 EXHAUST REQUIRED: 250 SCFM  
 RAIN GUTTER ABOVE CABINET DOOR PREVENTS RAIN FROM ENTERING CABINET  
 STAINLESS STEEL HINGES AND HARDWARE  
 RAIN HAT TO COVER STACK  
 SPECIAL ZINC CHROMATE PRIMER TO PREVENT RUST AND CORROSION

PROPRIETARY STATEMENT THIS DOCUMENT CONTAINS INFORMATION PROPRIETARY TO MATHESON TRI-GAS, INC. AND SHALL NOT BE REPRODUCED OR DISCLOSED TO THIRD PARTIES WITHOUT PRIOR WRITTEN CONSENT FROM MATHESON TRI-GAS.

TOLERANCES	
INCH	METRIC
X ± .1	X ± .8
.X ± .03	.X ± .3
.XX ± .01	.XX ± .13
.XXX ± .005	
63 ✓	1.6 ✓
ANGLES ± 1/2°	

MATERIAL:  
FINISH:  
THIRD ANGLE PROJECTION  
DO NOT SCALE DRAWING

APPROVALS	
DRAWN BY:	DATE:
DL	2/18/25
CHECKED BY:	DATE:
WS	2/21/25
ENGINEER:	DATE:
WS	2/21/25

**MATHESON**  
 est. 1954 The Gas Professionals™  
 GAS EQUIPMENT TECHNOLOGY GROUP, MONTGOMERVILLE, PA 18936

TITLE:  
**OUTLINE DRAWING  
 1178-HH HARD HAT CABINET,  
 2 CYL, SS HARDWARE, OUTDOOR USE**

SIZE: **D**  
 DWG. NO.: **MCAB-0489-OL**  
 REV: **A**  
 CREO SCALE: NTS SHEET 1 OF 1